

Anti-IGF2BP3 antibody (300-579) (STJ116296)

GENERAL INFORMATION

Product Type	Primary antibodies
Applications	WB/IHC-P/IF/ICC/IP/ELISA
Host / Source	Rabbit
Reactivity	Human/Mouse/Rat

PRODUCT PROPERTIES

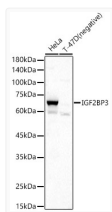
Clonality	Polyclonal
Concentration	Lot specific
Conjugation	Unconjugated
Purification	Affinity purification
Dilution Range	WB:1:500-1:1000 IHC-P:1:50-1:200 IF/ICC:1:50-1:100 IP:0.5 Mu g-4 Mu g antibody for 200 Mu g-400 Mu g extracts of whole cells ELISA:Recommended starting concentration is 1 Mu g/mL. Please optimize the concentration based on your specif
Formulation	PBS with 0.02% Sodium Azide, 50% Glycerol, pH 7.3.
Isotype	IgG
Molecular Weight	Protein Mw: 64kDa Observed Mw: 64kDa
Storage Instruction	Store at -20°C for up to 1 year from the date of receipt, and avoid repeat freeze-thaw cycles.

TARGET INFORMATION

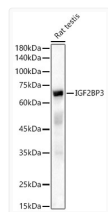
Gene ID	10643
Gene Symbol	IGF2BP3
UniProt ID	IF2B3_HUMAN
Immunogen Region	300-579
Immunogen Sequence	KKIEQDTDTKITISPLQELT LYNPERTIVKGNVETCAKA EEEIMKKIRESYENDIASMN LQAHILIPGLNLNALGLFPPT SGMPPTSGPPSAMTPPYQ FEQSETETVHLFIPALSVGA IIGKQGQHIKQLSRFAGASI KIAPAEAPDAKVRMVIITGP PEAQFKAQGRYIGKIKEENF VSPKEEVKLEAHIRVPSFAA GRVIGKGGKTVNELQNLSSA EVVVRDQTPDENDQVVVK
Specificity	Recombinant fusion protein containing a sequence corresponding to amino acids 300-579 of human IGF2BP3 (NP_006538.2).

ADDITIONAL INFORMATION

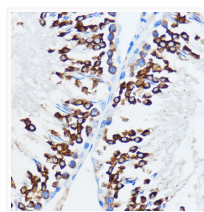
Note STRICTLY FOR FURTHER SCIENTIFIC RESEARCH USE ONLY (RUO). MUST NOT TO BE USED IN DIAGNOSTIC OR THERAPEUTIC APPLICATIONS.



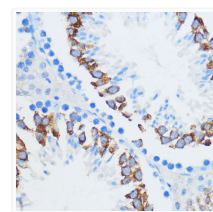
Western blot analysis of various lysates, using IGF2BP3 antibody (STJ116296) at 1:500 dilution. Secondary antibody: HRP Goat Anti-rabbit IgG (H+L) (STJS000856) at 1:10000 dilution. Lysates/proteins: 25 Mu g per lane. Blocking buffer: 3% non-fat dry milk in TBST. Detection: ECL Basic Kit. Exposure time: 15s.



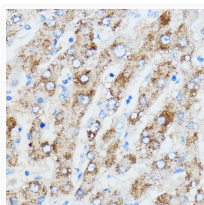
Western blot analysis of Rat testis, using IGF2BP3 antibody (STJ116296) at 1:500 dilution. Secondary antibody: HRP Goat Anti-rabbit IgG (H+L) (STJS000856) at 1:10000 dilution. Lysates/proteins: 25 Mu g per lane. Blocking buffer: 3% non-fat dry milk in TBST. Detection: ECL Basic Kit. Exposure time: 15s.



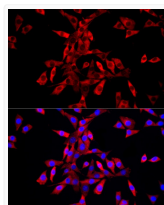
Immunohistochemistry analysis of paraffin-embedded rat testis using IGF2BP3 antibody (STJ116296) at dilution of 1:100 (40x lens). Perform microwave antigen retrieval with 10 mM PBS buffer pH 7. 2 before commencing with immunohistochemistry staining protocol.



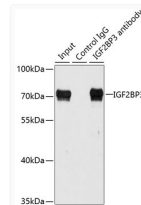
Immunohistochemistry analysis of paraffin-embedded mouse testis using IGF2BP3 antibody (STJ116296) at dilution of 1:100 (40x lens). Perform microwave antigen retrieval with 10 mM PBS buffer pH 7. 2 before commencing with immunohistochemistry staining protocol.



Immunohistochemistry analysis of paraffin-embedded human liver using IGF2BP3 antibody (STJ116296) at dilution of 1:100 (40x lens). Perform microwave antigen retrieval with 10 mM PBS buffer pH 7. 2 before commencing with immunohistochemistry staining protocol.



Immunofluorescence analysis of NIH/3T3 cells using IGF2BP3 rabbit polyclonal antibody (STJ116296) at dilution of 1:50 (40x lens). Blue: DAPI for nuclear staining.



Immunoprecipitation analysis of 100 Mu g extracts of HepG2 cells using 3 Mu g IGF2BP3 antibody (STJ116296). Western blot was performed from the immunoprecipitate using IGF2BP3 antibody (STJ116296) at a dilution of 1:1000.