

## Anti-ATRIP antibody (1-260) (STJ116274)

### GENERAL INFORMATION

Product Type	Primary antibodies
Applications	WB/IF/ICC/IP/ELISA
Host / Source	Rabbit
Reactivity	Human

### PRODUCT PROPERTIES

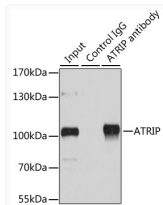
Clonality	Polyclonal
Concentration	Lot specific
Conjugation	Unconjugated
Purification	Affinity purification
Dilution Range	WB:1:500-1:2000 IF/CC:1:50-1:200 IP:0.5 Mu g-4 Mu g antibody for 200 Mu g-400 Mu g extracts of whole cells ELISA:Recommended starting concentration is 1 Mu g/mL. Please optimize the concentration based on your specific assay requirements
Formulation	PBS with 0.02% Sodium Azide, 50% Glycerol, pH 7.3.
Isotype	IgG
Molecular Weight	Protein Mw: 86kDa Observed Mw: 100kDa/113kDa
Storage Instruction	Store at -20°C for up to 1 year from the date of receipt, and avoid repeat freeze-thaw cycles.

### TARGET INFORMATION

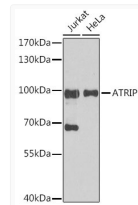
Gene ID	<a href="#">84126</a>
Gene Symbol	<a href="#">ATRIP</a>
UniProt ID	<a href="#">ATRIP_HUMAN</a>
Immunogen Region	1-260
Immunogen Sequence	MAGTSAPGSKRRSEPPAPRP GPPPGTGHPPSKRARGFSAA AAPDPDDPFGAHGDFTADDL EELDTLASQALSQCFAAARD VSSDHKVRHLLDGMKNPSG KNRETVPIKDNFEVLQAQ YKELKEKMKVMEEEVLKNG EIKILRDSLHQTESVLEEQR RSHFLLQEKTQALSDKEKE FSKQLQSLQSELQFKDAEMN ELRTRKLTQSERANKLAAPSV SHVSPRKNPSVVIKPEACS
Specificity	Recombinant fusion protein containing a sequence corresponding to amino acids 1-260 of human ATRIP (NP_569055.1).

### ADDITIONAL INFORMATION

Note **STRICTLY FOR FURTHER SCIENTIFIC RESEARCH USE ONLY (RUO). MUST NOT TO BE USED IN DIAGNOSTIC OR THERAPEUTIC APPLICATIONS.**



Immunoprecipitation analysis of 200 Mu g extracts of HeLa cells using 1 Mu g ATRIP antibody (STJ116274). Western blot was performed from the immunoprecipitate using ATRIP antibody (STJ116274) at a dilution of 1:1000.



Western blot analysis of various lysates using ATRIP Rabbit polyclonal antibody (STJ116274) at 1:1000 dilution. Secondary antibody: HRP Goat Anti-Rabbit IgG (H+L) (STJS000856) at 1:10000 dilution. Lysates/proteins: 25 Mu g per lane. Blocking buffer: 3% nonfat dry milk in TBST. Detection: ECL Basic Kit. Exposure time: 30s.