

## Anti-SERPINA10 antibody (165-444) (STJ116256)

### GENERAL INFORMATION

Product Type	Primary antibodies
Applications	WB/IF/ICC/ELISA
Host / Source	Rabbit
Reactivity	Human/Mouse/Rat

### PRODUCT PROPERTIES

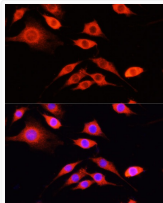
Clonality	Polyclonal
Concentration	Lot specific
Conjugation	Unconjugated
Purification	Affinity purification
Dilution Range	WB:1:500-1:2000 IF/CC:1:20-1:100 ELISA:Recommended starting concentration is 1 $\mu$ g/mL. Please optimize the concentration based on your specific assay requirements.
Formulation	PBS with 0.02% Sodium Azide, 50% Glycerol, pH 7.3.
Isotype	IgG
Molecular Weight	Protein Mw: 51kDa Observed Mw: 51kDa
Storage Instruction	Store at -20°C for up to 1 year from the date of receipt, and avoid repeat freeze-thaw cycles.

### TARGET INFORMATION

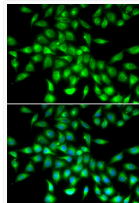
Gene ID	<a href="#">51156</a>
Gene Symbol	<a href="#">SERPINA10</a>
UniProt ID	<a href="#">ZPL_HUMAN</a>
Immunogen Region	165-444
Immunogen Sequence	FAFIHKDFDVKETFFNLSKR YFDTECVPMNFRNASQAKRL MNHYINKETRGKIPKLFDEI NPETKLLIVDYILFKGKWLTPFDVPVTEVDTFHLDKYKTI KVPMMYGAGKFASTFDKNFR CHVLKLPYQGNATMLVVLME KMGDHLALEDYLTDDLVTW LRNMKTRNMEVFFPKFKLDQ KYEMHELLRQMGIRRIFFSPF ADLSELSATGRNLQVSRVLQ RTVIEVDERGTEAVAGILS
Specificity	Recombinant fusion protein containing a sequence corresponding to amino acids 165-444 of human SERPINA10 (NP_001094077.1).

### ADDITIONAL INFORMATION

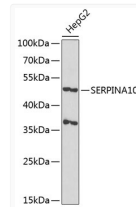
Note **STRICTLY FOR FURTHER SCIENTIFIC RESEARCH USE ONLY (RUO). MUST NOT TO BE USED IN DIAGNOSTIC OR THERAPEUTIC APPLICATIONS.**



Immunofluorescence analysis of PC-12 cells using SERPINA10 antibody (STJ116256) at dilution of 1:100 (40x lens). Blue: DAPI staining.



Immunofluorescence analysis of A549 cells using SERPINA10 antibody (STJ116256). Blue: DAPI for nuclear staining.



Western blot analysis of extracts of HepG2 cells, using SERPINA10 antibody (STJ116256) at 1:1000 dilution. Secondary antibody: HRP Goat Anti-Rabbit IgG (H+L) (STJS000856) at 1:10000 dilution. Lysates/proteins: 25  $\mu$ g per lane. Blocking buffer: 3% nonfat dry milk in TBST. Detection: ECL Basic Kit. Exposure time: 120s.