

Anti-ENPP4 antibody (90-230) (STJ116245)

GENERAL INFORMATION

Product Type	Primary antibodies
Applications	WB/ELISA
Host / Source	Rabbit
Reactivity	Human/Mouse

PRODUCT PROPERTIES

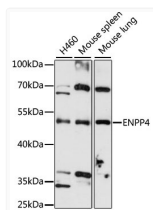
Clonality	Polyclonal
Concentration	Lot specific
Conjugation	Unconjugated
Purification	Affinity purification
Dilution Range	WB:1:500-1:2000 ELISA:Recommended starting concentration is 1 µg/mL. Please optimize the concentration based on your specific assay requirements.
Formulation	PBS with 0.01% Thimerosal, 50% Glycerol, pH 7.3.
Isotype	IgG
Molecular Weight	Protein Mw: 52kDa Observed Mw: 52kDa
Storage Instruction	Store at -20°C for up to 1 year from the date of receipt, and avoid repeat freeze-thaw cycles.

TARGET INFORMATION

Gene ID	22875
Gene Symbol	ENPP4
UniProt ID	ENPP4_HUMAN
Immunogen Region	90-230
Immunogen Sequence	ANSMYDAVTKKHFSDSNDKD PFWWNEAVPIWVTNQLQENR SAAAMWPGTDVPIHDTISS YFMNYNSSVSFEERLNNITM WLNNSNPPVTFATLYWEEP D ASGHKYGPEDKENMSRVLKK IDDLIGDLVQRLKMLGLWEN L
Specificity	Recombinant fusion protein containing a sequence corresponding to amino acids 90-230 of human ENPP4 (NP_055751.1).

ADDITIONAL INFORMATION

Note STRICTLY FOR FURTHER SCIENTIFIC RESEARCH USE ONLY (RUO). MUST NOT TO BE USED IN DIAGNOSTIC OR THERAPEUTIC APPLICATIONS.



Western blot analysis of various lysates using ENPP4 Rabbit pAb (STJ116245) at 1:3000 dilution.

Secondary antibody: HRP-conjugated Goat anti-Rabbit IgG (H+L) (STJS000856) at 1:10000 dilution.

Lysates/proteins: 25 µg per lane.

Blocking buffer: 3% nonfat dry milk in TBST.

Detection: ECL Basic Kit

Exposure time: 90s.