

## Anti-SGCA antibody (60-290) (STJ116232)

### GENERAL INFORMATION

|               |                    |
|---------------|--------------------|
| Product Type  | Primary antibodies |
| Applications  | WB/IF/ICC/ELISA    |
| Host / Source | Rabbit             |
| Reactivity    | Human/Mouse/Rat    |

### PRODUCT PROPERTIES

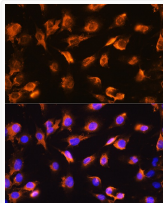
|                     |  |
|---------------------|--|
| Clonality           | Polyclonal   |
| Concentration       | Lot specific   |
| Conjugation         | Unconjugated   |
| Purification        | Affinity purification  |
| Dilution Range      | WB:1:500-1:2000<br>IF/CC:1:50-1:200<br>ELISA:Recommended starting concentration is 1 Mu g/mL. Please optimize the concentration based on your specific assay requirements. |
| Formulation         | PBS with 0.01% Thimerosal, 50% Glycerol, pH 7.3.   |
| Isotype             | IgG  |
| Molecular Weight    | Protein Mw: 43kDa<br>Observed Mw: 43kDa  |
| Storage Instruction | Store at -20°C for up to 1 year from the date of receipt, and avoid repeat freeze-thaw cycles.   |

### TARGET INFORMATION

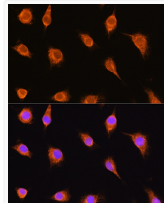
|                    |  |
|--------------------|--|
| Gene ID            | <a href="#">6442</a>   |
| Gene Symbol        | <a href="#">SGCA</a>   |
| UniProt ID         | <a href="#">SGCA_HUMAN</a>   |
| Immunogen Region   | 60-290   |
| Immunogen Sequence | ITYHAHLQGHDPDLPRWLRYT QRSPPHHPGFLYGSATPEDRG LQVIEVTAYNRDSFDTTQR<br>LVLEIGDPEGPLLPYQAEFL VRSHDAEEVLPSTPASRFLS ALGGLWEPGELQLLNVTSL<br>DRGGRVPLPIEGRKEGVYIK VGSASPFSTCLKMVASPD SH ARCAQQQPPLLSCYDTLAPH<br>FRVDWCNVTLVDKSVPEPAD EVPTPGDGILEHDPFFCPPT EAPDRDFLVDA |
| Specificity        | Recombinant fusion protein containing a sequence corresponding to amino acids 60-290 of human alpha Sarcoglycan (alpha Sarcoglycan (SGCA) ) (NP_000014.1).   |

### ADDITIONAL INFORMATION

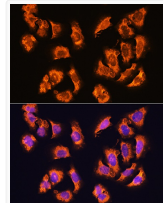
Note **STRICTLY FOR FURTHER SCIENTIFIC RESEARCH USE ONLY (RUO). MUST NOT TO BE USED IN DIAGNOSTIC OR THERAPEUTIC APPLICATIONS.**



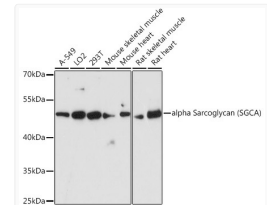
Immunofluorescence analysis of C6 cells using alpha Sarcoglycan (alpha Sarcoglycan (SGCA) ) Rabbit polyclonal antibody (STJ116232) at dilution of 1:100. Secondary antibody: Cy3 Goat Anti-Rabbit IgG (H+L) at 1:500 dilution. Blue: DAPI for nuclear staining.



Immunofluorescence analysis of L929 cells using alpha Sarcoglycan (alpha Sarcoglycan (SGCA) ) Rabbit polyclonal antibody (STJ116232) at dilution of 1:100. Secondary antibody: Cy3 Goat Anti-Rabbit IgG (H+L) at 1:500 dilution. Blue: DAPI for nuclear staining.



Immunofluorescence analysis of U2OS cells using alpha Sarcoglycan (alpha Sarcoglycan (SGCA) ) Rabbit polyclonal antibody (STJ116232) at dilution of 1:100. Secondary antibody: Cy3 Goat Anti-Rabbit IgG (H+L) at 1:500 dilution. Blue: DAPI for nuclear staining.



Western blot analysis of various lysates using alpha Sarcoglycan (SGCA) Rabbit polyclonal antibody (STJ116232) at 1:3000 dilution. Secondary antibody: HRP Goat Anti-Rabbit IgG (H+L) (STJS000856) at 1:10000 dilution. Lysates/proteins: 25 Mu g per lane. Blocking buffer: 3% nonfat dry milk in TBST. Detection: ECL Basic Kit. Exposure time: 90s.