

Anti-RPL13 antibody (1-211) (STJ116231)

GENERAL INFORMATION

Product Type	Primary antibodies
Applications	WB/IHC-P/IF/ICC/ELISA
Host / Source	Rabbit
Reactivity	Human/Mouse/Rat

PRODUCT PROPERTIES

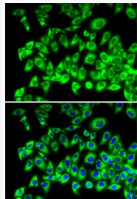
Clonality	Polyclonal
Concentration	Lot specific
Conjugation	Unconjugated
Purification	Affinity purification
Dilution Range	WB:1:200-1:2000 IHC-P:1:50-1:200 IF/CC:1:50-1:200 ELISA:Recommended starting concentration is 1 Mu g/mL. Please optimize the concentration based on your specific assay requirements.
Formulation	PBS with 0.02% Sodium Azide, 50% Glycerol, pH 7.3.
Isotype	IgG
Molecular Weight	Protein Mw: 24kDa Observed Mw: 28kDa
Storage Instruction	Store at -20°C for up to 1 year from the date of receipt, and avoid repeat freeze-thaw cycles.

TARGET INFORMATION

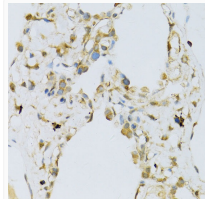
Gene ID	6137
Gene Symbol	RPL13
UniProt ID	RL13_HUMAN
Immunogen Region	1-211
Immunogen Sequence	MAPSRNGMVLKPHFHKDWQR RVATWFNQPKIRRRKARQ AKARRIAPRPASGPIRPVIR CPTVRYHTKVRAGRGFSLEE LRVAGIHKVARTIGISVDP RRRNKSTESLQANVQRLKEY RSKLILFPRKPSAPKKGDS AEELKLATQLTGPVMPVRNV YKKEKARVITEEKNFKAFA SLRMARANARLFGIRAKRAK EAAEQDVEKKK
Specificity	Recombinant fusion protein containing a sequence corresponding to amino acids 1-211 of human RPL13 (NP_150254.1).

ADDITIONAL INFORMATION

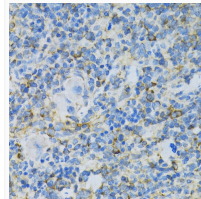
Note STRICTLY FOR FURTHER SCIENTIFIC RESEARCH USE ONLY (RUO). MUST NOT TO BE USED IN DIAGNOSTIC OR THERAPEUTIC APPLICATIONS.



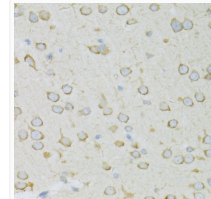
Immunofluorescence analysis of MCF7 cells using RPL13 antibody (STJ116231). Blue: DAPI for nuclear staining.



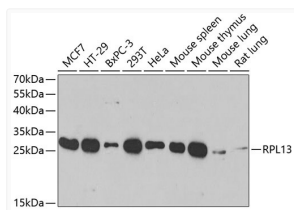
Immunohistochemistry analysis of paraffin-embedded human lung using RPL13 antibody (STJ116231) at dilution of 1:100 (40x lens). Perform microwave antigen retrieval with 10 mM PBS buffer pH 7. 2 before commencing with immunohistochemistry staining protocol.



Immunohistochemistry analysis of paraffin-embedded rat spleen using RPL13 antibody (STJ116231) at dilution of 1:100 (40x lens). Perform microwave antigen retrieval with 10 mM PBS buffer pH 7. 2 before commencing with immunohistochemistry staining protocol.



Immunohistochemistry analysis of paraffin-embedded rat brain using RPL13 antibody (STJ116231) at dilution of 1:100 (40x lens). Perform microwave antigen retrieval with 10 mM PBS buffer pH 7. 2 before commencing with immunohistochemistry staining protocol.



Western blot analysis of extracts of various cell lines, using RPL13 antibody (STJ116231) at 1:1000 dilution. Secondary antibody: HRP Goat Anti-Rabbit IgG (H+L) (STJS000856) at 1:10000 dilution. Lysates/proteins: 25 Mu g per lane. Blocking buffer: 3% nonfat dry milk in TBST. Detection: ECL Basic Kit. Exposure time: 15s.