

Anti-NR3C2 antibody (450-600) (STJ116199)

GENERAL INFORMATION

Product Type	Primary antibodies
Applications	WB/IHC-P/IF/ICC/ELISA
Host / Source	Rabbit
Reactivity	Human/Mouse/Rat

PRODUCT PROPERTIES

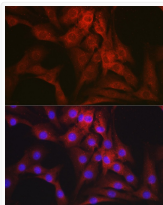
Clonality	Polyclonal
Concentration	Lot specific
Conjugation	Unconjugated
Purification	Affinity purification
Dilution Range	WB:1:500-1:1000 IHC-P:1:50-1:200 IF/ICC:1:50-1:200 ELISA:Recommended starting concentration is 1 Mu g/mL. Please optimize the concentration based on your specific assay requirements.
Formulation	PBS with 0.01% Thimerosal, 50% Glycerol, pH 7.3.
Isotype	IgG
Molecular Weight	Protein Mw: 107kDa Observed Mw: 100kDa
Storage Instruction	Store at -20°C for up to 1 year from the date of receipt, and avoid repeat freeze-thaw cycles.

TARGET INFORMATION

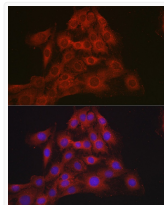
Gene ID	4306
Gene Symbol	NR3C2
UniProt ID	MCR_HUMAN
Immunogen Region	450-600
Immunogen Sequence	FPFMDGSYF5FMDDKDYYSL SGILGPPVPGFDGNCEGSGF PVGIKQEPDDGSYYPEASIP SSAIVGVNSGGQSFHYRIGA QGTISLSRSARDQSFQHLSS FPPVNTLVESWKSHGDLSSR RSDGYPVLEYIPENVSSSTL RSVSTGSSSRPS
Specificity	Recombinant fusion protein containing a sequence corresponding to amino acids 450-600 of human Mineralocorticoid receptor (NR3C2) (NP_000892.2).

ADDITIONAL INFORMATION

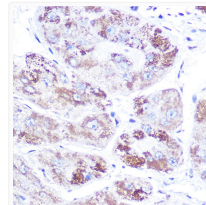
Note STRICTLY FOR FURTHER SCIENTIFIC RESEARCH USE ONLY (RUO). MUST NOT TO BE USED IN DIAGNOSTIC OR THERAPEUTIC APPLICATIONS.



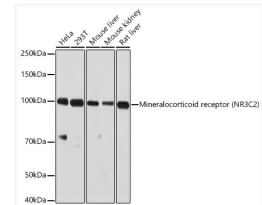
Immunofluorescence analysis of NIH-3T3 cells using Mineralocorticoid receptor (NR3C2) Rabbit polyclonal antibody (STJ116199) at dilution of 1:100 (40x lens). Secondary antibody: Cy3 Goat Anti-Rabbit IgG (H+L) at 1:500 dilution. Blue: DAPI for nuclear staining.



Immunofluorescence analysis of C6 cells using Mineralocorticoid receptor (NR3C2) Rabbit polyclonal antibody (STJ116199) at dilution of 1:100 (40x lens). Secondary antibody: Cy3 Goat Anti-Rabbit IgG (H+L) at 1:500 dilution. Blue: DAPI for nuclear staining.



Immunohistochemistry analysis of Mineralocorticoid receptor (NR3C2) in paraffin-embedded human liver cancer using Mineralocorticoid receptor (NR3C2) Rabbit polyclonal antibody (STJ116199) at dilution of 1:100 (40x lens). Perform high pressure antigen retrieval with 10 mM citrate buffer pH 6, 0 before commencing with immunohistochemistry staining protocol.



Western blot analysis of various lysates using Mineralocorticoid receptor (NR3C2) Rabbit polyclonal antibody (STJ116199) at 1:1000 dilution. Secondary antibody: HRP Goat Anti-Rabbit IgG (H+L) (STJS000856) at 1:10000 dilution. Lysates/proteins: 25 Mu g per lane. Blocking buffer: 3% nonfat dry milk in TBST. Detection: ECL Enhanced Kit. Exposure time: 90s.