

Anti-UFD1L antibody (1-307) (STJ116196)

GENERAL INFORMATION

Product Type	Primary antibodies
Applications	WB/IF/ICC/ELISA
Host / Source	Rabbit
Reactivity	Human/Mouse

PRODUCT PROPERTIES

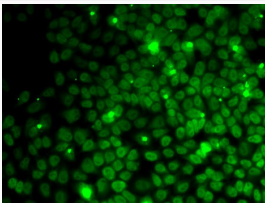
Clonality	Polyclonal
Concentration	Lot specific
Conjugation	Unconjugated
Purification	Affinity purification
Dilution Range	WB:1:500-1:2000 IF/CC:1:50-1:100 ELISA:Recommended starting concentration is 1 Mu g/mL. Please optimize the concentration based on your specific assay requirements.
Formulation	PBS with 0.02% Sodium Azide, 50% Glycerol, pH 7.3.
Isotype	IgG
Molecular Weight	Protein Mw: 35kDa Observed Mw: 37kDa
Storage Instruction	Store at -20°C for up to 1 year from the date of receipt, and avoid repeat freeze-thaw cycles.

TARGET INFORMATION

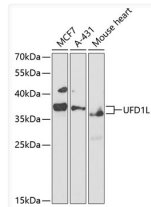
Gene ID	7353
Gene Symbol	UFD1
UniProt ID	UFD1_HUMAN
Immunogen Region	1-307
Immunogen Sequence	MFSFNMFDPHPIPRVFQNRFS TQYRCFSVSMLAGPNDRSDV EKGKKIIMPPSALDQLSRLN ITYPMLFKLTNKNSDRMTHC GVLEFVADEGICYLPHWMMQ NLLLEGGGLVQVESVNLQVA TYSKFPQSPDFLDITNPKA VLENALRNFACLTTGDVIAI NYNEKIYELRVMETKPKDAV SIIECDMNVDFDAPLGYKEP ERQVQHEESTEAGEADHSGYA GELGFRAFSGSGNRLDGKK
Specificity	Recombinant fusion protein containing a sequence corresponding to amino acids 1-307 of human UFD1L (NP_005650.2).

ADDITIONAL INFORMATION

Note STRICTLY FOR FURTHER SCIENTIFIC RESEARCH USE ONLY (RUO). MUST NOT TO BE USED IN DIAGNOSTIC OR THERAPEUTIC APPLICATIONS.



Immunofluorescence analysis of MCF7 cells using UFD1L antibody (STJ116196).



Western blot analysis of extracts of various cell lines, using UFD1L antibody (STJ116196) at 1:1000 dilution. Secondary antibody: HRP Goat Anti-Rabbit IgG (H+L) (STJS000856) at 1:10000 dilution. Lysates/proteins: 25 Mu g per lane. Blocking buffer: 3% nonfat dry milk in TBST. Detection: ECL Basic Kit. Exposure time: 90s.