

Anti-APEX1 antibody (1-318) (STJ116180)

GENERAL INFORMATION

Product Type	Primary antibodies
Applications	WB/IF/ICC/IP/ELISA
Host / Source	Rabbit
Reactivity	Human

PRODUCT PROPERTIES

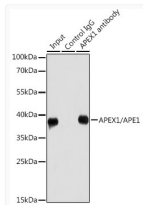
Clonality	Polyclonal
Concentration	Lot specific
Conjugation	Unconjugated
Purification	Affinity purification
Dilution Range	WB:1:500-1:2000 IF/CC:1:50-1:100 IP:0.5 Mu g-4 Mu g antibody for 200 Mu g-400 Mu g extracts of whole cells ELISA:Recommended starting concentration is 1 Mu g/mL. Please optimize the concentration based on your specific assay requirements
Formulation	PBS with 0.02% Sodium Azide, 50% Glycerol, pH 7.3.
Isotype	IgG
Molecular Weight	Protein Mw: 36kDa Observed Mw: 39kDa
Storage Instruction	Store at -20°C for up to 1 year from the date of receipt, and avoid repeat freeze-thaw cycles.

TARGET INFORMATION

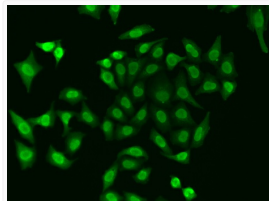
Gene ID	328
Gene Symbol	APEX1
UniProt ID	APEX1_HUMAN
Immunogen Region	1-318
Immunogen Sequence	MPKRGKKGAVAEDGDELRTPEAKKSKTAAKNDKEAAGE GPALYEDPPDQKTSPSGKPA TLKICSWNVVDGLRAWIKKKG LDWVKEEAPDILCLQETKCS ENKLPALQELPGLSHQYWS APSDEKGYSGVGLLSRQCPL KVSYGIGDEEHDQEGRVIVA EFDSFVLVTAYVVPNAGRGLV RLEYRQRWDEAFRKFLLKGLA SRKPLVLCGDLNVAHEEIDL RNPKGKKNAGFTPQERQG
Specificity	Recombinant fusion protein containing a sequence corresponding to amino acids 1-318 of human APEX1/APE1 (NP_542380.1).

ADDITIONAL INFORMATION

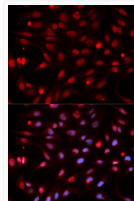
Note **STRICTLY FOR FURTHER SCIENTIFIC RESEARCH USE ONLY (RUO). MUST NOT TO BE USED IN DIAGNOSTIC OR THERAPEUTIC APPLICATIONS.**



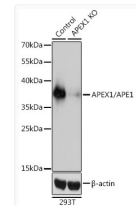
Immunoprecipitation analysis of 200 Mu g extracts of HeLa cells using 1 Mu g APEX1/APE1 antibody (STJ116180). Western blot was performed from the immunoprecipitate using APEX1/APE1 antibody (STJ116180) at a dilution of 1:1000.



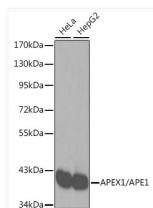
Immunofluorescence analysis of A549 cells using [KO Validated] APEX1/APE1 Rabbit polyclonal antibody (STJ116180). Secondary antibody: Cy3 Goat Anti-Rabbit IgG (H+L) at 1:500 dilution.



Immunofluorescence analysis of HeLa cells using [KO Validated] APEX1/APE1 Rabbit polyclonal antibody (STJ116180). Secondary antibody: Cy3 Goat Anti-Rabbit IgG (H+L) at 1:500 dilution. Blue: DAPI for nuclear staining.



Western blot analysis of lysates from wild type (WT) and APEX1/APE1 knockout (KO) 293T cells, using [KO Validated] APEX1/APE1 Rabbit polyclonal antibody (STJ116180) at 1:3000 dilution. Secondary antibody: HRP Goat Anti-Rabbit IgG (H+L) (STJS000856) at 1:10000 dilution. Lysates/proteins: 25 Mu g per lane. Blocking buffer: 3% nonfat dry milk in TBST. Detection: ECL Basic Kit. Exposure time: 1s.



Western blot analysis of various lysates using [KO Validated] APEX1/APE1 Rabbit polyclonal antibody (STJ116180). Secondary antibody: HRP Goat Anti-Rabbit IgG (H+L) (STJS000856) at 1:10000 dilution. Lysates/proteins: 25 Mu g per lane. Blocking buffer: 3% nonfat dry milk in TBST.