

Anti-REST antibody (760-1060) (STJ116170)

GENERAL INFORMATION

Product Type	Primary antibodies
Applications	IF/ICC/ELISA
Host / Source	Rabbit
Reactivity	Human

PRODUCT PROPERTIES

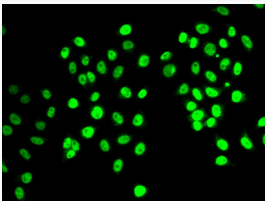
Clonality	Polyclonal
Concentration	Lot specific
Conjugation	Unconjugated
Purification	Affinity purification
Dilution Range	IF/ICC:1:50-1:200 ELISA:Recommended starting concentration is 1 µg/mL. Please optimize the concentration based on your specific assay requirements.
Formulation	PBS with 0.02% Sodium Azide, 50% Glycerol, pH 7.3.
Isotype	IgG
Molecular Weight	Protein Mw: 122kDa Observed Mw:
Storage Instruction	Store at -20°C for up to 1 year from the date of receipt, and avoid repeat freeze-thaw cycles.

TARGET INFORMATION

Gene ID	5978
Gene Symbol	REST
UniProt ID	REST_HUMAN
Immunogen Region	760-1060
Immunogen Sequence	PVKIELSPPIEVVQKEPVQM ELSPPMGVVQKEPAQREPPP PREPPLHMEPISKKPLRKD KKEKSNMQSERARKEQVLIE VGLVPVKDSWLLKESVSTED LSPPSPPLPKENLREEASGD QKLLNTGEGNKEAPLQKVG AEEADESLPGLAANINESTHI SSSGQNLNTPEGETLNGKHQ TDSIVCEMKMDTDQNTREN L TGINSTVEEPVSPMLPPSAV EEREAVSKTALASPPATMA
Specificity	Recombinant fusion protein containing a sequence corresponding to amino acids 760-1060 of human REST/NRSF (NP_001180437.1).

ADDITIONAL INFORMATION

Note	STRICTLY FOR FURTHER SCIENTIFIC RESEARCH USE ONLY (RUO). MUST NOT TO BE USED IN DIAGNOSTIC OR THERAPEUTIC APPLICATIONS.
------	---



Immunofluorescence analysis of MCF-7 cells using REST/NRSF Rabbit polyclonal antibody (STJ116170). Secondary antibody: Cy3 Goat Anti-Rabbit IgG (H+L) at 1:500 dilution.