

Anti-SNRPB antibody (1-100) (STJ116166)

GENERAL INFORMATION

Product Type	Primary antibodies
Applications	WB/IHC-P/ELISA
Host / Source	Rabbit
Reactivity	Human/Mouse/Rat

PRODUCT PROPERTIES

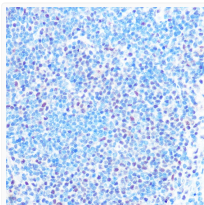
Clonality	Polyclonal
Concentration	Lot specific
Conjugation	Unconjugated
Purification	Affinity purification
Dilution Range	WB:1:500-1:2000 IHC-P:1:50-1:200 ELISA:Recommended starting concentration is 1 µg/mL. Please optimize the concentration based on your specific assay requirements.
Formulation	PBS with 0.01% Thimerosal, 50% Glycerol, pH 7.3.
Isotype	IgG
Molecular Weight	Protein Mw: 25kDa Observed Mw: 30kDa
Storage Instruction	Store at -20°C for up to 1 year from the date of receipt, and avoid repeat freeze-thaw cycles.

TARGET INFORMATION

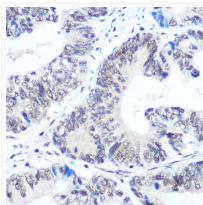
Gene ID	6628
Gene Symbol	SNRPB
UniProt ID	R5MB_HUMAN
Immunogen Region	1-100
Immunogen Sequence	MTVGKSSKMLQHDYRMRCI LQDGRIFIGTFKAFDKHMNL ILCDCDEFKIKPKNSKQAE REEKRVLGLVLLRGENLVSM TVEGPPPKDTGIARVPLAGA
Specificity	A synthetic peptide corresponding to a sequence within amino acids 1-100 of human SNRPB (NP_003082.1).

ADDITIONAL INFORMATION

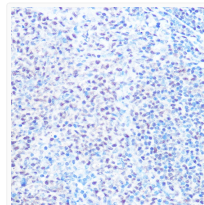
Note **STRICTLY FOR FURTHER SCIENTIFIC RESEARCH USE ONLY (RUO). MUST NOT TO BE USED IN DIAGNOSTIC OR THERAPEUTIC APPLICATIONS.**



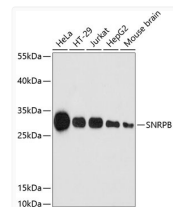
Immunohistochemistry analysis of SNRPB in paraffin-embedded mouse spleen using SNRPB Rabbit polyclonal antibody (STJ116166) at dilution of 1:100 (40x lens). Perform microwave antigen retrieval with 10 mM PBS buffer pH 7. 2 before commencing with immunohistochemistry staining protocol.



Immunohistochemistry analysis of SNRPB in paraffin-embedded human colon carcinoma using SNRPB Rabbit polyclonal antibody (STJ116166) at dilution of 1:100 (40x lens). Perform microwave antigen retrieval with 10 mM PBS buffer pH 7. 2 before commencing with immunohistochemistry staining protocol.



Immunohistochemistry analysis of SNRPB in paraffin-embedded rat spleen using SNRPB Rabbit polyclonal antibody (STJ116166) at dilution of 1:100 (40x lens). Perform microwave antigen retrieval with 10 mM PBS buffer pH 7. 2 before commencing with immunohistochemistry staining protocol.



Western blot analysis of various lysates using SNRPB Rabbit polyclonal antibody (STJ116166) at 1:3000 dilution. Secondary antibody: HRP Goat Anti-Rabbit IgG (H+L) (STJS000856) at 1:10000 dilution. Lysates/proteins: 25 µg per lane. Blocking buffer: 3% nonfat dry milk in TBST. Detection: ECL Enhanced Kit. Exposure time: 180s.