

## Anti-PRDM1 antibody (70-210) (STJ116165)

### GENERAL INFORMATION

Product Type	Primary antibodies
Applications	WB/IF/ICC/ELISA
Host / Source	Rabbit
Reactivity	Human/Mouse

### PRODUCT PROPERTIES

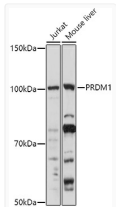
Clonality	Polyclonal
Concentration	Lot specific
Conjugation	Unconjugated
Purification	Affinity purification
Dilution Range	WB:1:500-1:1000 IF/CC:1:50-1:200 ELISA:Recommended starting concentration is 1 µg/mL. Please optimize the concentration based on your specific assay requirements.
Formulation	PBS with 0.01% Thimerosal, 50% Glycerol, pH 7.3.
Isotype	IgG
Molecular Weight	Protein Mw: 92kDa Observed Mw: 100kDa
Storage Instruction	Store at -20°C for up to 1 year from the date of receipt, and avoid repeat freeze-thaw cycles.

### TARGET INFORMATION

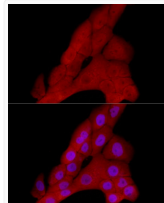
Gene ID	<a href="#">639</a>
Gene Symbol	<a href="#">PRDM1</a>
UniProt ID	<a href="#">PRDM1_HUMAN</a>
Immunogen Region	70-210
Immunogen Sequence	GADGGTSSVQAEASLPRNLLF KYATNSEEVIGVMSKEYIPK GTRFGPLIGEIYNTDTPKN ANRKYFWRIYSRGELHHFID GFNEEKSNNWMRYVNPASPR EQNLAAQCNGMNIYFYTIKP IPANQELLVWYCRDFAERLH Y
Specificity	Recombinant fusion protein containing a sequence corresponding to amino acids 70-210 of human PRDM1 (NP_001189.2).

### ADDITIONAL INFORMATION

Note **STRICTLY FOR FURTHER SCIENTIFIC RESEARCH USE ONLY (RUO). MUST NOT TO BE USED IN DIAGNOSTIC OR THERAPEUTIC APPLICATIONS.**



Western blot analysis of extracts of various cell lines, using (STJ116165) at 1:1000 dilution. Secondary antibody: HRP Goat Anti-rabbit IgG (H+L) (STJS000856) at 1:10000 dilution. Lysates/proteins: 25 µg per lane. Blocking buffer: 3% non-fat dry milk in TBST. Detection: ECL Enhanced Kit. Exposure time: 180s.



Immunofluorescence analysis of A-431 cells using PRDM1 rabbit polyclonal antibody (STJ116165) at dilution of 1:50 (40x lens). Blue: DAPI for nuclear staining.