

Anti-CAMP antibody (31-170) (STJ116153)

GENERAL INFORMATION

| | |
|---------------|-----------------------|
| Product Type | Primary antibodies |
| Applications | WB/IHC-P/IF/ICC/ELISA |
| Host / Source | Rabbit |
| Reactivity | Human/Mouse |

PRODUCT PROPERTIES

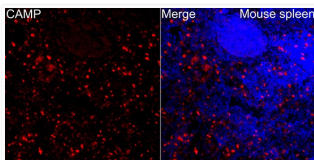
| | |
|---------------------|--|
| Clonality | Polyclonal |
| Concentration | Lot specific |
| Conjugation | Unconjugated |
| Purification | Affinity purification |
| Dilution Range | WB:1:500-1:1000 IHC-P:1:50-1:200 IF/ICC:1:50-1:200 ELISA:Recommended starting concentration is 1 μ g/mL. Please optimize the concentration based on your specific assay requirements. |
| Formulation | PBS with 0.09% Sodium Azide, 50% Glycerol, pH7.3. |
| Isotype | IgG |
| Molecular Weight | Protein Mw: 19kDa Observed Mw: 19kDa |
| Storage Instruction | Store at -20°C for up to 1 year from the date of receipt, and avoid repeat freeze-thaw cycles. |

TARGET INFORMATION

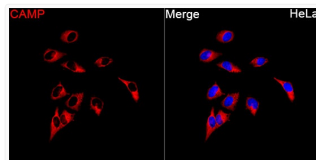
| | |
|--------------------|---|
| Gene ID | 820 |
| Gene Symbol | CAMP |
| UniProt ID | CAMP_HUMAN |
| Immunogen Region | 31-170 |
| Immunogen Sequence | IIAQVLSYKEAVLRAIDGIN QRSSDANLYRLLDLDPRTM DGDPDTPKPKVSFTVKETVCP RTTQQSPEDCDFKDKGLVQR CMGTVTLNQARGSFDISCDK DNKRFFALLGDFFRKSKEKIG KEFKRIVQRIKDFLRNLVPR |
| Specificity | Recombinant fusion protein containing a sequence corresponding to amino acids 31-170 of human CAMP (NP_004336.3). |

ADDITIONAL INFORMATION

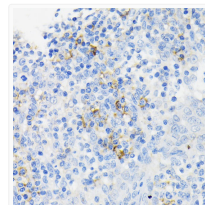
Note **STRICTLY FOR FURTHER SCIENTIFIC RESEARCH USE ONLY (RUO). MUST NOT TO BE USED IN DIAGNOSTIC OR THERAPEUTIC APPLICATIONS.**



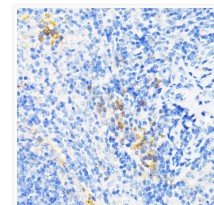
Immunofluorescence analysis of Mouse spleen tissue using CAMP Rabbit polyclonal antibody (STJ116153) at a dilution of 1:100 (40x lens). Secondary antibody: Cy3-conjugated Goat anti-Rabbit IgG (H+L) at 1:500 dilution. Blue: DAPI for nuclear staining. High pressure antigen retrieval performed with 0.01M Citrate Buffer (pH 6.0) prior to IF staining.



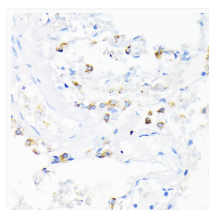
Immunofluorescence analysis of HeLa cells using CAMP Rabbit polyclonal antibody (STJ116153) at a dilution of 1:100 (40x lens). Secondary antibody: Cy3-conjugated Goat anti-Rabbit IgG (H+L) at 1:500 dilution. Blue: DAPI for nuclear staining.



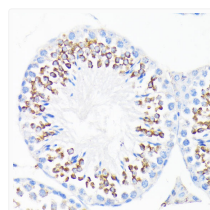
Immunohistochemistry analysis of CAMP in paraffin-embedded human tonsil using CAMP Rabbit polyclonal antibody (STJ116153) at dilution of 1:200 (40x lens). Perform microwave antigen retrieval with 10 mM PBS buffer pH 7.2 before commencing with immunohistochemistry staining protocol.



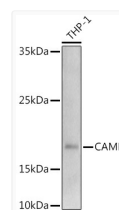
Immunohistochemistry analysis of CAMP in paraffin-embedded mouse spleen using CAMP Rabbit polyclonal antibody (STJ116153) at dilution of 1:200 (40x lens). Perform microwave antigen retrieval with 10 mM PBS buffer pH 7.2 before commencing with immunohistochemistry staining protocol.



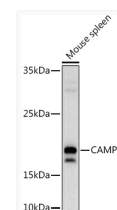
Immunohistochemistry analysis of CAMP in paraffin-embedded human lung using CAMP Rabbit polyclonal antibody (STJ116153) at dilution of 1:200 (40x lens). Perform microwave antigen retrieval with 10 mM PBS buffer pH 7.2 before commencing with immunohistochemistry staining protocol.



Immunohistochemistry analysis of CAMP in paraffin-embedded mouse testis using CAMP Rabbit polyclonal antibody (STJ116153) at dilution of 1:200 (40x lens). Perform microwave antigen retrieval with 10 mM PBS buffer pH 7.2 before commencing with immunohistochemistry staining protocol.



Western blot analysis of lysates from THP-1 cells, using (STJ116153) at 1:1000 dilution. Secondary antibody: HRP Goat Anti-Rabbit IgG (H+L) (STJS000856) at 1:10000 dilution. Lysates/proteins: 25 μ g per lane. Blocking buffer: 3% nonfat dry milk in TBST. Detection: ECL Basic Kit. Exposure time: 180s.



Western blot analysis of lysates from Mouse spleen, using (STJ116153) at 1:1000 dilution. Secondary antibody: HRP Goat Anti-Rabbit IgG (H+L) (STJS000856) at 1:10000 dilution. Lysates/proteins: 25 μ g per lane. Blocking buffer: 3% nonfat dry milk in TBST. Detection: ECL Basic Kit. Exposure time: 10s.