

Anti-NUDT15 antibody (1-164) (STJ116076)

GENERAL INFORMATION

Product Type	Primary antibodies
Applications	WB/IHC-P/ELISA
Host / Source	Rabbit
Reactivity	Mouse/Rat

PRODUCT PROPERTIES

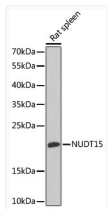
Clonality	Polyclonal
Concentration	Lot specific
Conjugation	Unconjugated
Purification	Affinity purification
Dilution Range	WB:1:500-1:2000 IHC-P:1:100-1:200 ELISA:Recommended starting concentration is 1 μ g/mL. Please optimize the concentration based on your specific assay requirements.
Formulation	PBS with 0.02% Sodium Azide, 50% Glycerol, pH 7.3.
Isotype	IgG
Molecular Weight	Protein Mw: 19kDa Observed Mw: 19kDa
Storage Instruction	Store at -20°C for up to 1 year from the date of receipt, and avoid repeat freeze-thaw cycles.

TARGET INFORMATION

Gene ID	55270
Gene Symbol	NUDT15
UniProt ID	NUDT15_HUMAN
Immunogen Region	1-164
Immunogen Sequence	MTASAQPRGRRPGVGVGVVV TSCKHPRCVLLGKRKGSVGA GSFQLPGGHLEFGETWEECA QRETWEEAALHLKNVHFASV VNSFIEKENYHYVTILMKGE VDVTHDSEPKNVEPEKNESW EWVWPWEELPLDQLFWGLRC LKEQGYDPFKEDLNHLVGYK GNHL
Specificity	Recombinant fusion protein containing a sequence corresponding to amino acids 1-164 of human NUDT15 (NP_060753.1).

ADDITIONAL INFORMATION

Note **STRICTLY FOR FURTHER SCIENTIFIC RESEARCH USE ONLY (RUO). MUST NOT TO BE USED IN DIAGNOSTIC OR THERAPEUTIC APPLICATIONS.**



Western blot analysis of extracts of rat spleen, using NUDT15 antibody (STJ116076) at 1:1000 dilution. Secondary antibody: HRP Goat Anti-Rabbit IgG (H+L) (STJS000856) at 1:10000 dilution. Lysates/proteins: 25 μ g per lane. Blocking buffer: 3% nonfat dry milk in TBST. Detection: ECL Basic Kit. Exposure time: 60s.