

## Anti-SPDEF antibody (1-335) (STJ116049)

### GENERAL INFORMATION

Product Type	Primary antibodies
Applications	WB/IHC-P/IF/ICC/ELISA
Host / Source	Rabbit
Reactivity	Human/Rat

### PRODUCT PROPERTIES

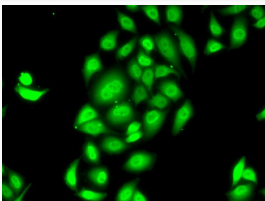
Clonality	Polyclonal
Concentration	Lot specific
Conjugation	Unconjugated
Purification	Affinity purification
Dilution Range	WB:1:500-1:1000 IHC-P:1:50-1:200 IF/CC:1:50-1:100 ELISA:Recommended starting concentration is 1 $\mu$ g/mL. Please optimize the concentration based on your specific assay requirements.
Formulation	PBS with 0.02% Sodium Azide, 50% Glycerol, pH 7.3.
Isotype	IgG
Molecular Weight	Protein Mw: 38kDa Observed Mw: 50kDa
Storage Instruction	Store at -20°C for up to 1 year from the date of receipt, and avoid repeat freeze-thaw cycles.

### TARGET INFORMATION

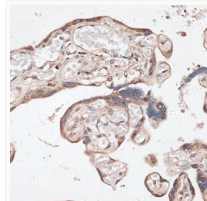
Gene ID	<a href="#">25803</a>
Gene Symbol	<a href="#">SPDEF</a>
UniProt ID	<a href="#">SPDEF_HUMAN</a>
Immunogen Region	1-335
Immunogen Sequence	MGSASPGLSSVSPSHLLPP DTVSRTGLEKAAAGAVGLER RDWSPSPATPEQGLSAFYL SYFDMLYPEDSSWAAKAPGA SSREPPPEEPQCPVIDSQA PAGSLDLVPGGLTLEEHSLE QVQSMVVGELVKDIETACKL LNIADPMDWSPSNVQKWLL WTEHQYRLPPMGKAFQELAG KELCAMSEEQFRQRSPLGGD VLHAHLDIWKSAAWMKERTS PGAIHYCASTSEESWTDSE
Specificity	Recombinant fusion protein containing a sequence corresponding to amino acids 1-335 of human SPDEF (NP_036523.1).

### ADDITIONAL INFORMATION

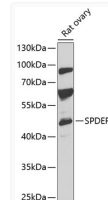
Note STRICTLY FOR FURTHER SCIENTIFIC RESEARCH USE ONLY (RUO). MUST NOT TO BE USED IN DIAGNOSTIC OR THERAPEUTIC APPLICATIONS.



Immunofluorescence analysis of MCF7 cells using SPDEF antibody (STJ116049).



Immunohistochemistry analysis of paraffin-embedded human placenta using SPDEF antibody (STJ116049) at dilution of 1:100 (40x lens). Perform microwave antigen retrieval with 10 mM PBS buffer pH 7.2 before commencing with immunohistochemistry staining protocol.



Western blot analysis of extracts of rat ovary, using SPDEF antibody (STJ116049) at 1:1000 dilution. Secondary antibody: HRP Goat Anti-Rabbit IgG (H+L) (STJS000856) at 1:10000 dilution. Lysates/proteins: 25  $\mu$ g per lane. Blocking buffer: 3% nonfat dry milk in TBST. Detection: ECL Basic Kit. Exposure time: 30s.