

## Anti-SULT2A1 antibody (1-145) (STJ115998)

### GENERAL INFORMATION

Product Type	Primary antibodies
Applications	WB/IHC-P/ELISA
Host / Source	Rabbit
Reactivity	Human/Mouse/Rat

### PRODUCT PROPERTIES

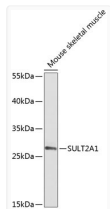
Clonality	Polyclonal
Concentration	Lot specific
Conjugation	Unconjugated
Purification	Affinity purification
Dilution Range	WB:1:500-1:2000 IHC-P:1:50-1:200 ELISA:Recommended starting concentration is 1 Mu g/mL. Please optimize the concentration based on your specific assay requirements.
Formulation	PBS with 0.02% Sodium Azide, 50% Glycerol, pH 7.3.
Isotype	IgG
Molecular Weight	Protein Mw: 34kDa Observed Mw: 34kDa
Storage Instruction	Store at -20°C for up to 1 year from the date of receipt, and avoid repeat freeze-thaw cycles.

### TARGET INFORMATION

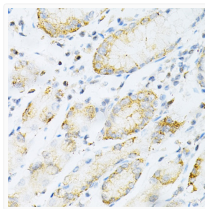
Gene ID	<a href="#">6822</a>
Gene Symbol	<a href="#">SULT2A1</a>
UniProt ID	<a href="#">ST2A1_HUMAN</a>
Immunogen Region	1-145
Immunogen Sequence	MSDDFLWFEGIAFPTMGFRS ETLRKRVRDEFVIRDEDEVIIIL TYPKSGTNWLAEILCLMHSK GDAKWIQSVPIWERSPWVES EIGYTLSETESPRLFSSHL PIQLFPKSFSSKAKVIYLM RNPRDVLVSGYFFWKNMKFI KKPKS
Specificity	Recombinant fusion protein containing a sequence corresponding to amino acids 1-145 of human SULT2A1 (NP_003158.2).

### ADDITIONAL INFORMATION

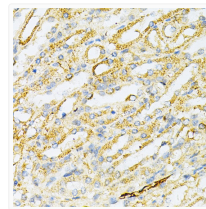
Note **STRICTLY FOR FURTHER SCIENTIFIC RESEARCH USE ONLY (RUO). MUST NOT TO BE USED IN DIAGNOSTIC OR THERAPEUTIC APPLICATIONS.**



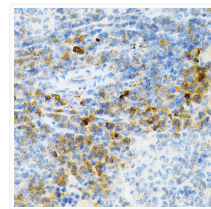
Western blot analysis of extracts of mouse skeletal muscle, using SULT2A1 antibody (STJ115998) at 1:2000 dilution. Secondary antibody: HRP Goat Anti-rabbit IgG (H+L) (STJS00856) at 1:10000 dilution. Lysates/proteins: 25 Mu g per lane. Blocking buffer: 3% non-fat dry milk in TBST. Detection: ECL Enhanced Kit. Exposure time: 50s.



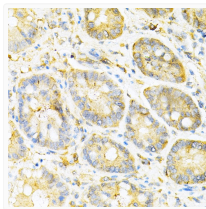
Immunohistochemistry analysis of paraffin-embedded human gastric cancer using SULT2A1 rabbit polyclonal antibody (STJ115998) at dilution of 1:100 (40x lens). Perform microwave antigen retrieval with 10 mM PBS buffer pH 7. 2 before commencing with immunohistochemistry staining protocol.



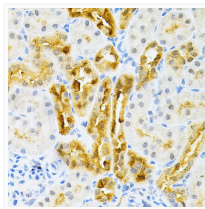
Immunohistochemistry analysis of paraffin-embedded mouse kidney using SULT2A1 rabbit polyclonal antibody (STJ115998) at dilution of 1:100 (40x lens). Perform microwave antigen retrieval with 10 mM PBS buffer pH 7. 2 before commencing with immunohistochemistry staining protocol.



Immunohistochemistry analysis of paraffin-embedded mouse spleen using SULT2A1 rabbit polyclonal antibody (STJ115998) at dilution of 1:100 (40x lens). Perform microwave antigen retrieval with 10 mM PBS buffer pH 7. 2 before commencing with immunohistochemistry staining protocol.



Immunohistochemistry analysis of paraffin-embedded mouse stomach using SULT2A1 rabbit polyclonal antibody (STJ115998) at dilution of 1:100 (40x lens). Perform microwave antigen retrieval with 10 mM PBS buffer pH 7. 2 before commencing with immunohistochemistry staining protocol.



Immunohistochemistry analysis of paraffin-embedded rat kidney using SULT2A1 rabbit polyclonal antibody (STJ115998) at dilution of 1:100 (40x lens). Perform microwave antigen retrieval with 10 mM PBS buffer pH 7. 2 before commencing with immunohistochemistry staining protocol.