

Anti-PSMA5 antibody (1-241) (STJ115988)

GENERAL INFORMATION

Product Type	Primary antibodies
Applications	WB/IP/ELISA
Host / Source	Rabbit
Reactivity	Human/Mouse/Rat

PRODUCT PROPERTIES

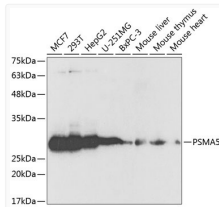
Clonality	Polyclonal
Concentration	Lot specific
Conjugation	Unconjugated
Purification	Affinity purification
Dilution Range	WB:1:500-1:2000 IP:0.5 Mu g-4 Mu g antibody for 200 Mu g-400 Mu g extracts of whole cells ELISA:Recommended starting concentration is 1 Mu g/mL. Please optimize the concentration based on your specific assay requirements.
Formulation	PBS with 0.02% Sodium Azide, 50% Glycerol, pH 7.3.
Isotype	IgG
Molecular Weight	Protein Mw: 26kDa Observed Mw: 26kDa
Storage Instruction	Store at -20°C for up to 1 year from the date of receipt, and avoid repeat freeze-thaw cycles.

TARGET INFORMATION

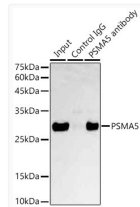
Gene ID	5686
Gene Symbol	PSMA5
UniProt ID	PSA5_HUMAN
Immunogen Region	1-241
Immunogen Sequence	MFLTRSEYDRGVNTFSPEGR LFGVEYAIEAIKLGSTAIGI QTSEGVCLAVEKRITSPLME PSSIEKIVEIDAHIGCAMSG LIADAKTLIDKARVETQNHWFYNYNETMTVESVTQAVSNLA LQFG EEDADPGAMSRPFGVA LLFGGVDEKGPQLFHM D PSG TFVQCDARAIGSASEGAQSS LQEVYHKSM TLKEAIKSSLI ILKQVMEEKLNATNIELATV QPGQNFHMFTKEELEEVIK
Specificity	Recombinant fusion protein containing a sequence corresponding to amino acids 1-241 of human PSMA5 (NP_002781.2).

ADDITIONAL INFORMATION

Note STRICTLY FOR FURTHER SCIENTIFIC RESEARCH USE ONLY (RUO). MUST NOT TO BE USED IN DIAGNOSTIC OR THERAPEUTIC APPLICATIONS.



Western blot analysis of extracts of various cell lines, using PSMA5 antibody (STJ115988) at 1:1000 dilution. Secondary antibody: HRP Goat Anti-rabbit IgG (H+L) (STJS000856) at 1:10000 dilution. Lysates/proteins: 25 Mu g per lane. Blocking buffer: 3% non-fat dry milk in TBST.



Immunoprecipitation analysis of 600 Mu g extracts of mouse liver cells using 3 Mu g PSMA5 antibody (STJ115988). Western blot was performed from the immunoprecipitate using PSMA5 antibody (STJ115988) at a dilution of 1:1000.