

Anti-SERPINF2 antibody (302-491) (STJ115978)

GENERAL INFORMATION

Product Type	Primary antibodies
Applications	WB/ELISA
Host / Source	Rabbit
Reactivity	Human/Mouse/Rat

PRODUCT PROPERTIES

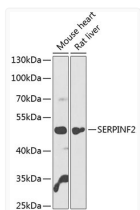
Clonality	Polyclonal
Concentration	Lot specific
Conjugation	Unconjugated
Purification	Affinity purification
Dilution Range	WB:1:500-1:2000 ELISA:Recommended starting concentration is 1 μ g/mL. Please optimize the concentration based on your specific assay requirements.
Formulation	PBS with 0.02% Sodium Azide, 50% Glycerol, pH 7.3.
Isotype	IgG
Molecular Weight	Protein Mw: 55kDa Observed Mw: 54kDa
Storage Instruction	Store at -20°C for up to 1 year from the date of receipt, and avoid repeat freeze-thaw cycles.

TARGET INFORMATION

Gene ID	5345
Gene Symbol	SERPINF2
UniProt ID	A2AP_HUMAN
Immunogen Region	302-491
Immunogen Sequence	VPTHFENVVSQVLANLSWDT LHPPLVWERPTKVRLPKLYL KHQMDLVATLSQLGLQELFQ APDLRGISEQSLVVSQVQHQ STLELSEVGVVEAAAATSIAM SRMSLSSFVSNRPFLFFIFE DTTGLPLFVGSVRNPNSAP RELKEQQDSPGNKDFLQSLK GFPRGDKLFGPDLKLVPPME EDYPQFGSPK
Specificity	Recombinant fusion protein containing a sequence corresponding to amino acids 302-491 of human SERPINF2 (NP_001159392.1).

ADDITIONAL INFORMATION

Note STRICTLY FOR FURTHER SCIENTIFIC RESEARCH USE ONLY (RUO). MUST NOT TO BE USED IN DIAGNOSTIC OR THERAPEUTIC APPLICATIONS.



Western blot analysis of extracts of various cell lines, using SERPINF2 antibody (STJ115978) at 1:1000 dilution. Secondary antibody: HRP Goat Anti-Rabbit IgG (H+L) (STJS000856) at 1:10000 dilution. Lysates/proteins: 25 μ g per lane. Blocking buffer: 3% nonfat dry milk in TBST. Detection: ECL Basic Kit. Exposure time: 60s.