

Anti-PHKG2 antibody (237-406) (STJ115975)

GENERAL INFORMATION

Product Type	Primary antibodies
Applications	WB/ELISA
Host / Source	Rabbit
Reactivity	Human/Mouse/Rat

PRODUCT PROPERTIES

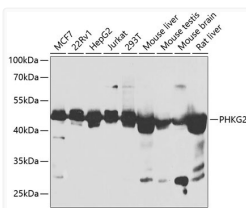
Clonality	Polyclonal
Concentration	Lot specific
Conjugation	Unconjugated
Purification	Affinity purification
Dilution Range	WB:1:500-1:2000 ELISA:Recommended starting concentration is 1 µg/mL. Please optimize the concentration based on your specific assay requirements.
Formulation	PBS with 0.02% Sodium Azide, 50% Glycerol, pH 7.3.
Isotype	IgG
Molecular Weight	Protein Mw: 46kDa Observed Mw: 46kDa
Storage Instruction	Store at -20°C for up to 1 year from the date of receipt, and avoid repeat freeze-thaw cycles.

TARGET INFORMATION

Gene ID	5261
Gene Symbol	PHKG2
UniProt ID	PHKG2_HUMAN
Immunogen Region	237-406
Immunogen Sequence	RQILMLRMIMEGQYQFSSPE WDDRSSTVKDLISRLQVDP EARLTAEQALQHPFFERCEG SQPWNLTPRQRFVRVAVWTVL AAGRVALSTHRVRPLTKNAL LRDYPALRSVRHLIDNCAFR LYGHWWKKGEQQNRAALFQH RPPGPFPIMGPEEEGDSAAI TEDEAVLVLG
Specificity	Recombinant fusion protein containing a sequence corresponding to amino acids 237-406 of human PHKG2 (NP_000285.1).

ADDITIONAL INFORMATION

Note STRICTLY FOR FURTHER SCIENTIFIC RESEARCH USE ONLY (RUO). MUST NOT TO BE USED IN DIAGNOSTIC OR THERAPEUTIC APPLICATIONS.



Western blot analysis of extracts of various cell lines, using PHKG2 antibody (STJ115975) at 1:1000 dilution. Secondary antibody: HRP Goat Anti-Rabbit IgG (H+L) (STJS000856) at 1:10000 dilution. Lysates/proteins: 25 µg per lane. Blocking buffer: 3% nonfat dry milk in TBST. Detection: ECL Enhanced Kit. Exposure time: 30s.