

Anti-NFIL3 antibody (133-462) (STJ115964)

GENERAL INFORMATION

Product Type	Primary antibodies
Applications	WB/IF/ICC/ELISA
Host / Source	Rabbit
Reactivity	Human/Rat

PRODUCT PROPERTIES

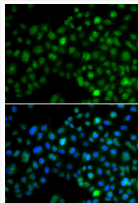
Clonality	Polyclonal
Concentration	Lot specific
Conjugation	Unconjugated
Purification	Affinity purification
Dilution Range	WB:1:500-1:1000 IF/CC:1:50-1:100 ELISA:Recommended starting concentration is 1 Mu g/mL. Please optimize the concentration based on your specific assay requirements.
Formulation	PBS with 0.02% Sodium Azide, 50% Glycerol, pH 7.3.
Isotype	IgG
Molecular Weight	Protein Mw: 51kDa Observed Mw: 55kDa
Storage Instruction	Store at -20°C for up to 1 year from the date of receipt, and avoid repeat freeze-thaw cycles.

TARGET INFORMATION

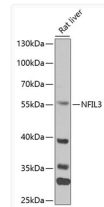
Gene ID	4783
Gene Symbol	NFIL3
UniProt ID	NFIL3_HUMAN
Immunogen Region	133-462
Immunogen Sequence	AYAQEIQKLSNSTAVYFQDY QTSKSNVSSFVDEHEPSMVS SSCISVIKHSPQSSLSDVSE VSSVEHTQESSVQGSCRSP E NKFQIIKQEPMELESYTREP RDDRGSYTASIYQNYMGNSF SGYSHSPPLQVNRSSNSP RTSETDDGVVGKSSDGEDEQ QVPKGPVHSPVELKHVHATV VKVPEVNSSALPHKLRKAK AMQIKVEAFDNEFEATQKLS SPIDMTSKRHFELEKHSAP
Specificity	Recombinant fusion protein containing a sequence corresponding to amino acids 133-462 of human NFIL3 (NP_005375.2).

ADDITIONAL INFORMATION

Note **STRICTLY FOR FURTHER SCIENTIFIC RESEARCH USE ONLY (RUO). MUST NOT TO BE USED IN DIAGNOSTIC OR THERAPEUTIC APPLICATIONS.**



Immunofluorescence analysis of MCF-7 cells using NFIL3 antibody (STJ115964). Blue: DAPI for nuclear staining.



Western blot analysis of extracts of mouse liver, using NFIL3 antibody (STJ115964) at 1:1000 dilution. Secondary antibody: HRP Goat Anti-Rabbit IgG (H+L) (STJS000856) at 1:10000 dilution. Lysates/proteins: 25 Mu g per lane. Blocking buffer: 3% nonfat dry milk in TBST. Detection: ECL Enhanced Kit. Exposure time: 60s.