

Anti-MAOA antibody (1-260) (STJ115959)

GENERAL INFORMATION

Product Type	Primary antibodies
Applications	IF/ICC/ELISA
Host / Source	Rabbit
Reactivity	Human

PRODUCT PROPERTIES

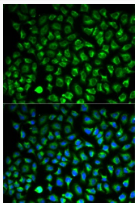
Clonality	Polyclonal
Concentration	Lot specific
Conjugation	Unconjugated
Purification	Affinity purification
Dilution Range	IF/ICC:1:50-1:200 ELISA:Recommended starting concentration is 1 µg/mL. Please optimize the concentration based on your specific assay requirements.
Formulation	PBS with 0.09% Sodium Azide, 50% Glycerol, pH7.3.
Isotype	IgG
Molecular Weight	Protein Mw: 61kDa Observed Mw: Refer to figures
Storage Instruction	Store at -20°C for up to 1 year from the date of receipt, and avoid repeat freeze-thaw cycles.

TARGET INFORMATION

Gene ID	4128
Gene Symbol	MAOA
UniProt ID	AOFA_HUMAN
Immunogen Region	1-260
Immunogen Sequence	MENQEKASIAGHMFVVVIG GGISGLSAAKLLTEYGVSVL VLEARDRVGGRTYIRNEHV DYVDVGGAYVGPTQNRILRL SKELGIETYKVNVSERLVQY VKGKTYPPFRGAFPPVWNPIA YLDYNNLWRTIDNMGKEIPT DAPWEAQHADKWDKMTMKEL IDKICWTKTARRFAYLFVNI NVTSEPHVESALWFLWYVKQ CGGTTTRIFSVTNGGQERKFV GGSGQVSERIMDLLGDQVK
Specificity	Recombinant fusion protein containing a sequence corresponding to amino acids 1-260 of human Monoamine Oxidase A (Monoamine Oxidase A (MAOA)) (NP_000231.1).

ADDITIONAL INFORMATION

Note	STRICTLY FOR FURTHER SCIENTIFIC RESEARCH USE ONLY (RUO). MUST NOT TO BE USED IN DIAGNOSTIC OR THERAPEUTIC APPLICATIONS.
------	-------------------------------------------------------------------------------------------------------------------------



Immunofluorescence analysis of HeLa cells using Monoamine Oxidase A (Monoamine Oxidase A (MAOA)) antibody (STJ115959). Blue: DAPI for nuclear staining.