

Anti-LAMP2 antibody (30-410) (STJ115952)

GENERAL INFORMATION

Product Type	Primary antibodies
Applications	WB/IHC-P/ELISA
Host / Source	Rabbit
Reactivity	Human/Mouse

PRODUCT PROPERTIES

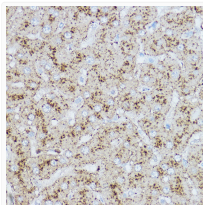
Clonality	Polyclonal
Concentration	Lot specific
Conjugation	Unconjugated
Purification	Affinity purification
Dilution Range	WB:1:500-1:1000 IHC-P:1:50-1:200 ELISA:Recommended starting concentration is 1 Mu g/mL. Please optimize the concentration based on your specific assay requirements.
Formulation	PBS with 0.05% Proclin300, 50% Glycerol, pH 7.3.
Isotype	IgG
Molecular Weight	Protein Mw: 45kDa Observed Mw: 100-130kDa
Storage Instruction	Store at -20°C for up to 1 year from the date of receipt, and avoid repeat freeze-thaw cycles.

TARGET INFORMATION

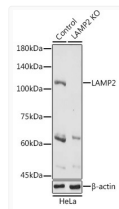
Gene ID	3920
Gene Symbol	LAMP2
UniProt ID	LAMP2_HUMAN
Immunogen Region	30-410
Immunogen Sequence	ELNLDSEENATCLYAKWQMN FTVRYETTnkYkTvtISDH GTVtYNGSICGDDQNGPKIA VQFGPFGSvIANFTKAASTY SIdSVSFSYNTGDNTTFPDA EDKGILtVDELLAIRIPLND LFRcNSLStLEKNDVVQHYW DVLVQAFVQNGtVStNEFLC DKDKtStVAPtIHTtVPSPT TTPTPKEkPEAGtYSvNNGN DTCLLAtMGLQLNItQDKVA SVININPNtTHTStGSCRSH
Specificity	Recombinant fusion protein containing a sequence corresponding to amino acids 29-375 of human LAMP2 (NP_002285.1).

ADDITIONAL INFORMATION

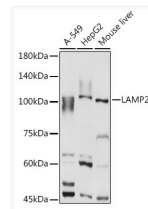
Note **STRICTLY FOR FURTHER SCIENTIFIC RESEARCH USE ONLY (RUO). MUST NOT TO BE USED IN DIAGNOSTIC OR THERAPEUTIC APPLICATIONS.**



Immunohistochemistry analysis of LAMP2 in paraffin-embedded human liver using LAMP2 Rabbit polyclonal antibody (STJ115952) at dilution of 1:200 (40x lens). Perform high pressure antigen retrieval with 10 mM citrate buffer pH 6.0 before commencing with immunohistochemistry staining protocol.



Western blot analysis of lysates from wild type (WT) and LAMP2 knockout (KO) HeLa cells, using [KO Validated] LAMP2 Rabbit polyclonal antibody (STJ115952) at 1:1000 dilution. Secondary antibody: HRP Goat Anti-Rabbit IgG (H+L) (STJS000856) at 1:10000 dilution. Lysates/proteins: 25 Mu g per lane. Blocking buffer: 3% nonfat dry milk in TBST. Detection: ECL Basic Kit. Exposure time: 1s.



Western blot analysis of various lysates using [KO Validated] LAMP2 Rabbit polyclonal antibody (STJ115952) at 1:1000 dilution. Secondary antibody: HRP Goat Anti-Rabbit IgG (H+L) (STJS000856) at 1:10000 dilution. Lysates/proteins: 25 Mu g per lane. Blocking buffer: 3% nonfat dry milk in TBST. Detection: ECL Basic Kit. Exposure time: 1s.