

Anti-IFI16 antibody (1-785) (STJ115937)

GENERAL INFORMATION

Product Type	Primary antibodies
Applications	WB/IHC-P/ELISA
Host / Source	Rabbit
Reactivity	Human/Mouse/Rat

PRODUCT PROPERTIES

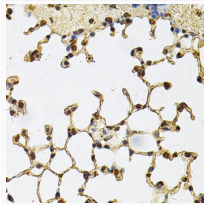
Clonality	Polyclonal
Concentration	Lot specific
Conjugation	Unconjugated
Purification	Affinity purification
Dilution Range	WB:1:500-1:1000 IHC-P:1:50-1:200 ELISA:Recommended starting concentration is 1 µg/mL. Please optimize the concentration based on your specific assay requirements.
Formulation	PBS with 0.02% Sodium Azide, 50% Glycerol, pH 7.3.
Isotype	IgG
Molecular Weight	Protein Mw: 88kDa Observed Mw: 85-98kDa
Storage Instruction	Store at -20°C for up to 1 year from the date of receipt, and avoid repeat freeze-thaw cycles.

TARGET INFORMATION

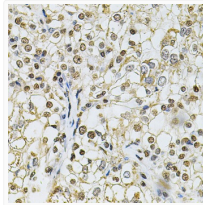
Gene ID	3428
Gene Symbol	IFI16
UniProt ID	IFI16_HUMAN
Immunogen Region	1-785
Immunogen Sequence	MGKKYKNIVLLKGLEVINDY HFRMVKSLLSNDLKLNLKMR EYDKIQIADLMEEKFRGDA GLGKLIKIFEDIPTLEDLAE TLKKEKLVKGPALSRRKK EVDATSPAPSTSTVKTEGA EATPGAQKRKKSTKEKAGPK GSKVSEEQTPPPAGAGMS TAMGRSPSPKTSLSAPPNSS STENPKTVAKCQVTPRRNLV QKRPVIVKVLSTTKPFYET PEMEKKIMFHATVATQTQF
Specificity	Recombinant fusion protein containing a sequence corresponding to amino acids 1-300 of human IFI16 (NP_001351796.1).

ADDITIONAL INFORMATION

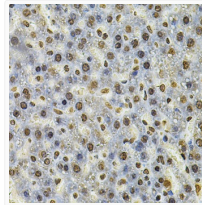
Note **STRICTLY FOR FURTHER SCIENTIFIC RESEARCH USE ONLY (RUO). MUST NOT TO BE USED IN DIAGNOSTIC OR THERAPEUTIC APPLICATIONS.**



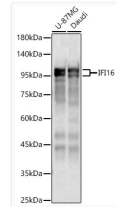
Immunohistochemistry analysis of paraffin-embedded mouse lung using IFI16 Antibody (STJ115937) at dilution of 1:100 (40x lens). Perform microwave antigen retrieval with 10 mM PBS buffer pH 7.2 before commencing with immunohistochemistry staining protocol.



Immunohistochemistry analysis of paraffin-embedded human kidney cancer using IFI16 Antibody (STJ115937) at dilution of 1:100 (40x lens). Perform microwave antigen retrieval with 10 mM PBS buffer pH 7.2 before commencing with immunohistochemistry staining protocol.



Immunohistochemistry analysis of paraffin-embedded rat liver using IFI16 Antibody (STJ115937) at dilution of 1:100 (40x lens). Perform microwave antigen retrieval with 10 mM PBS buffer pH 7.2 before commencing with immunohistochemistry staining protocol.



Western blot analysis of various lysates, using IFI16 antibody (STJ115937) at 1:1000 dilution. Secondary antibody: HRP Goat Anti-Rabbit IgG (H+L) (STJS000856) at 1:10000 dilution. Lysates/proteins: 25 µg per lane. Blocking buffer: 3% nonfat dry milk in TBST. Detection: ECL Basic Kit. Exposure time: 0.5s.