

## Anti-GRIA3 antibody (200-490) (STJ115928)

### GENERAL INFORMATION

Product Type	Primary antibodies
Applications	WB/IF/ICC/ELISA
Host / Source	Rabbit
Reactivity	Human/Mouse/Rat

### PRODUCT PROPERTIES

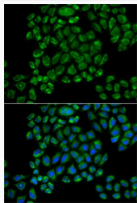
Clonality	Polyclonal
Concentration	Lot specific
Conjugation	Unconjugated
Purification	Affinity purification
Dilution Range	WB:1:500-1:1000 IF/CC:1:50-1:100 ELISA:Recommended starting concentration is 1 Mu g/mL. Please optimize the concentration based on your specific assay requirements.
Formulation	PBS with 0.02% Sodium Azide, 50% Glycerol, pH 7.3.
Isotype	IgG
Molecular Weight	Protein Mw: 101kDa Observed Mw: 101kDa
Storage Instruction	Store at -20°C for up to 1 year from the date of receipt, and avoid repeat freeze-thaw cycles.

### TARGET INFORMATION

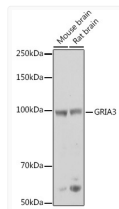
Gene ID	<a href="#">2892</a>
Gene Symbol	<a href="#">GRIA3</a>
UniProt ID	<a href="#">GRIA3_HUMAN</a>
Immunogen Region	200-490
Immunogen Sequence	QEFRRIIEEMDRRQEKRYLI DCEVERINTILEQVVILGKH SRGYHYMLANLGFTDILLER VMHGGANITGFOIVNNENPM VQQFIQRVWVRLDEREFPEAK NAPLKYTSALTHDAILVIAE AFRYLRRQRVDVSRSGSAGD CLANPAVPWSQGIDIERALK MVQVQGMTGNIQFDYGRRT NYTIDVYEMKVSRSRKAGYW NEYERFVFPFSDQQISNDSAS SENRTIVVTTILESPYVMY
Specificity	Recombinant fusion protein containing a sequence corresponding to amino acids 200-490 of human GRIA3 (NP_000819.3).

### ADDITIONAL INFORMATION

Note **STRICTLY FOR FURTHER SCIENTIFIC RESEARCH USE ONLY (RUO). MUST NOT TO BE USED IN DIAGNOSTIC OR THERAPEUTIC APPLICATIONS.**



Immunofluorescence analysis of HeLa cells using GRIA3 antibody (STJ115928). Blue: DAPI for nuclear staining.



Western blot analysis of extracts of various cell lines, using GRIA3 antibody (STJ115928) at 1:500 dilution. Secondary antibody: HRP Goat Anti-Rabbit IgG (H+L) (STJS000856) at 1:10000 dilution. Lysates/proteins: 25 Mu g per lane. Blocking buffer: 3% nonfat dry milk in TBST. Detection: ECL Basic Kit. Exposure time: 1s.