

Anti-DBH antibody (388-617) (STJ115906)

GENERAL INFORMATION

Product Type	Primary antibodies
Applications	WB/IHC-P/ELISA
Host / Source	Rabbit
Reactivity	Human/Mouse/Rat

PRODUCT PROPERTIES

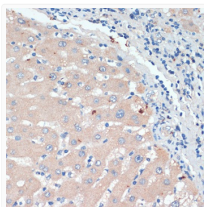
Clonality	Polyclonal
Concentration	Lot specific
Conjugation	Unconjugated
Purification	Affinity purification
Dilution Range	WB:1:500-1:2000 IHC-P:1:50-1:100 ELISA:Recommended starting concentration is 1 µg/mL. Please optimize the concentration based on your specific assay requirements.
Formulation	PBS with 0.02% Sodium Azide, 50% Glycerol, pH 7.3.
Isotype	IgG
Molecular Weight	Protein Mw: 69kDa Observed Mw: Refer to figures
Storage Instruction	Store at -20°C for up to 1 year from the date of receipt, and avoid repeat freeze-thaw cycles.

TARGET INFORMATION

Gene ID	1621
Gene Symbol	DBH
UniProt ID	DOPO_HUMAN
Immunogen Region	388-617
Immunogen Sequence	GYCTDKCTQLALPPSGIHIF ASQLHHTLTGRKVVTVLVRD GREWEIVNQDNHYSPIHFQEI RMLKKVSVHPGDVLITSCT YNTEDRELATVGGFGILEEM CVNYVHYYPQTQLELCKSAV DAGFLQKYFHLINRFNNEVDV CTCPQASVSQQFTSVPWNSF NRDVLKALYSFAPISMHCNK SSAVRFQGEWNLQPLPKVIS TLEETPQCPTSQGRSPAGP TVVSI GGGK
Specificity	Recombinant fusion protein containing a sequence corresponding to amino acids 388-617 of human DBH (NP_000778.3).

ADDITIONAL INFORMATION

Note	STRICTLY FOR FURTHER SCIENTIFIC RESEARCH USE ONLY (RUO). MUST NOT TO BE USED IN DIAGNOSTIC OR THERAPEUTIC APPLICATIONS.
------	---



Immunohistochemistry analysis of paraffin-embedded human liver using DBH antibody (STJ115906) at dilution of 1:200 (40x lens). Perform microwave antigen retrieval with 10 mM PBS buffer pH 7.2 before commencing with immunohistochemistry staining protocol.