

Anti-SLC25A20 antibody (40-55) (STJ115891)

GENERAL INFORMATION

Product Type	Primary antibodies
Applications	WB/ELISA
Host / Source	Rabbit
Reactivity	Human/Mouse/Rat

PRODUCT PROPERTIES

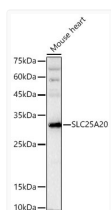
Clonality	Polyclonal
Concentration	Lot specific
Conjugation	Unconjugated
Purification	Affinity purification
Dilution Range	WB:1:1000-1:5000 ELISA:Recommended starting concentration is 1 Mu g/mL. Please optimize the concentration based on your specific assay requirements.
Formulation	PBS with 0.05% Proclin300, 50% Glycerol, pH7.3.
Isotype	IgG
Molecular Weight	Protein Mw: 33kDa Observed Mw: 33kDa/
Storage Instruction	Store at-20°C for up to 1 year from the date of receipt, and avoid repeat freeze-thaw cycles.

TARGET INFORMATION

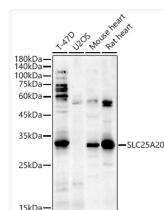
Gene ID	788
Gene Symbol	SLC25A20
UniProt ID	MCAT_HUMAN
Immunogen Region	40-55
Immunogen Sequence	MADQPKPISPLKNLLAGGFVGVCLVFGHPLDVKVRLQT QPPSLPGQPPMYSGTFDCFR KTLFREGITGLYRGMAPII GVTPMFAVCFVGFGLGKLLQ
Specificity	A synthetic peptide corresponding to a sequence within amino acids 1-100 of human SLC25A20 (NP_000378.1).

ADDITIONAL INFORMATION

Note **STRICTLY FOR FURTHER SCIENTIFIC RESEARCH USE ONLY (RUO). MUST NOT TO BE USED IN DIAGNOSTIC OR THERAPEUTIC APPLICATIONS.**



Western blot analysis of lysates from Mouse heart using SLC25A20 Rabbit polyclonal antibody (STJ115891) at 1:900 dilution. Secondary antibody:HRP Goat Anti-Rabbit IgG (H+L) (STJS000856) at 1:10000 dilution. Lysates/proteins: 25 Mu g per lane. Blocking buffer: 3% nonfat dry milk in TBST. Detection:ECL Basic Kit. Exposure time:3s.



Western blot analysis of various lysates using SLC25A20 Rabbit polyclonal antibody (STJ115891) at 1:400 dilution. Secondary antibody: HRP Goat Anti-Rabbit IgG (H+L) (STJS000856) at 1:10000 dilution. Lysates/proteins: 25 Mu g per lane. Blocking buffer: 3% nonfat dry milk in TBST. Detection: ECL Basic Kit. Exposure time: 180s.