

## Anti-MCAM antibody (26-646) (STJ115862)

### GENERAL INFORMATION

Product Type	Primary antibodies
Applications	WB/IHC-P/IF/ICC/ELISA
Host / Source	Rabbit
Reactivity	Human/Mouse/Rat

### PRODUCT PROPERTIES

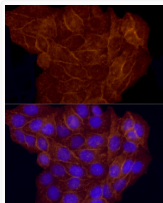
Clonality	Polyclonal
Concentration	Lot specific
Conjugation	Unconjugated
Purification	Affinity purification
Dilution Range	WB:1:100-1:500 IHC-P:1:50-1:200 IF/ICC:1:50-1:200 ELISA:Recommended starting concentration is 1 µg/mL. Please optimize the concentration based on your specific assay requirements.
Formulation	PBS with 0.05% Proclin300, 50% Glycerol, pH 7.3.
Isotype	IgG
Molecular Weight	Protein Mw: 72kDa Observed Mw: 120kDa
Storage Instruction	Store at -20°C for up to 1 year from the date of receipt, and avoid repeat freeze-thaw cycles.

### TARGET INFORMATION

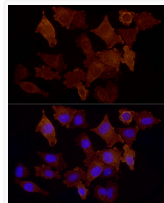
Gene ID	<a href="#">4162</a>
Gene Symbol	<a href="#">MCAM</a>
UniProt ID	<a href="#">MUC18_HUMAN</a>
Immunogen Region	26-646
Immunogen Sequence	GEAEQPAPLVEVEVGSTAL LKCGLSQSQGNLSHVDWFSV HKEKRTLIFRVRGQGGQSEPG GEYEQRLSLQDRGATLALTQ VTPQDERIFLCQGRKPRSQE YRIQLRVYKAPPEPNIQVNP LGIPVNSKEPEEVATCVGRN GYPIPQVIWYKNGRPLKEEK NRVHIIQSSQTVESSGLYTLQ SILKAQLVKEDKDAQFYCEL NYRLPSGNHMKESREVTVPV FYPTKVVWLEPEVGMMLKE
Specificity	Recombinant fusion protein containing a sequence corresponding to amino acids 26-350 of human CD146/MCAM (NP_006491.2).

### ADDITIONAL INFORMATION

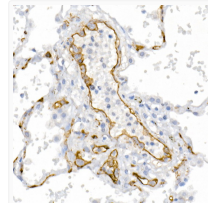
Note STRICTLY FOR FURTHER SCIENTIFIC RESEARCH USE ONLY (RUO). MUST NOT TO BE USED IN DIAGNOSTIC OR THERAPEUTIC APPLICATIONS.



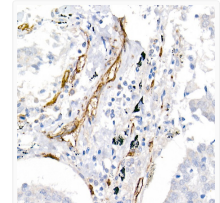
Immunofluorescence analysis of HeLa cells using CD146/MCAM Rabbit polyclonal antibody (STJ115862) at dilution of 1:50 (40x lens). Blue: DAPI for nuclear staining.



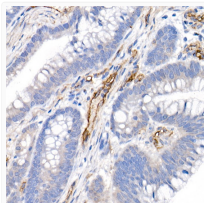
Immunofluorescence analysis of A375 cells using CD146/MCAM Rabbit polyclonal antibody (STJ115862) at dilution of 1:50 (40x lens). Blue: DAPI for nuclear staining.



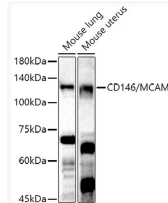
Immunohistochemistry analysis of paraffin-embedded human lung using CD146/MCAM Rabbit polyclonal antibody (STJ115862) at dilution of 1:20 (40x lens). Perform high pressure antigen retrieval with 10 mM citrate buffer pH 6.0 before commencing with immunohistochemistry staining protocol.



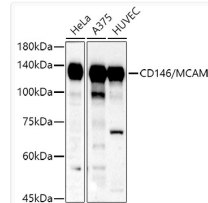
Immunohistochemistry analysis of paraffin-embedded human lung cancer using CD146/MCAM Rabbit polyclonal antibody (STJ115862) at dilution of 1:20 (40x lens). Perform high pressure antigen retrieval with 10 mM citrate buffer pH 6.0 before commencing with immunohistochemistry staining protocol.



Immunohistochemistry analysis of paraffin-embedded human colon carcinoma using CD146/MCAM Rabbit polyclonal antibody (STJ115862) at dilution of 1:20 (40x lens). Perform high pressure antigen retrieval with 10 mM citrate buffer pH 6.0 before commencing with immunohistochemistry staining protocol.



Western blot analysis of extracts of various cell lines, using CD146/MCAM antibody (STJ115862) at 1:500 dilution. Secondary antibody: HRP Goat Anti-Rabbit IgG (H+L) (STJS000856) at 1:10000 dilution. Lysates/proteins: 25 µg per lane. Blocking buffer: 3% nonfat dry milk in TBST. Detection: ECL Enhanced Kit. Exposure time: 180s.



Western blot analysis of extracts of various cell lines, using CD146/MCAM antibody (STJ115862) at 1:500 dilution. Secondary antibody: HRP Goat Anti-Rabbit IgG (H+L) (STJS000856) at 1:10000 dilution. Lysates/proteins: 25 µg per lane. Blocking buffer: 3% nonfat dry milk in TBST. Detection: ECL Basic Kit. Exposure time: 180s.