

## Anti-EMD antibody (1-220) (STJ115860)

### GENERAL INFORMATION

|               |                       |
|---------------|-----------------------|
| Product Type  | Primary antibodies    |
| Applications  | WB/IHC-P/IF/ICC/ELISA |
| Host / Source | Rabbit                |
| Reactivity    | Human/Mouse           |

### PRODUCT PROPERTIES

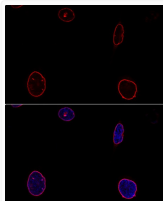
|                     |                                                                                                                                                                                              |
|---------------------|----------------------------------------------------------------------------------------------------------------------------------------------------------------------------------------------|
| Clonality           | Polyclonal                                                                                                                                                                                   |
| Concentration       | Lot specific                                                                                                                                                                                 |
| Conjugation         | Unconjugated                                                                                                                                                                                 |
| Purification        | Affinity purification                                                                                                                                                                        |
| Dilution Range      | WB:1:500-1:2000<br>IHC-P:1:50-1:200<br>IF/CC:1:50-1:200<br>ELISA:Recommended starting concentration is 1 µg/mL. Please optimize the concentration based on your specific assay requirements. |
| Formulation         | PBS with 0.02% Sodium Azide, 50% Glycerol, pH 7.3.                                                                                                                                           |
| Isotype             | IgG                                                                                                                                                                                          |
| Molecular Weight    | Protein Mw: 29kDa<br>Observed Mw: 35kDa                                                                                                                                                      |
| Storage Instruction | Store at -20°C for up to 1 year from the date of receipt, and avoid repeat freeze-thaw cycles.                                                                                               |

### TARGET INFORMATION

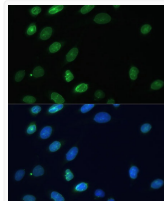
|                    |                                                                                                                                                                                                                                            |
|--------------------|--------------------------------------------------------------------------------------------------------------------------------------------------------------------------------------------------------------------------------------------|
| Gene ID            | <a href="#">2010</a>                                                                                                                                                                                                                       |
| Gene Symbol        | <a href="#">EMD</a>                                                                                                                                                                                                                        |
| UniProt ID         | <a href="#">EMD_HUMAN</a>                                                                                                                                                                                                                  |
| Immunogen Region   | 1-220                                                                                                                                                                                                                                      |
| Immunogen Sequence | MDNYADLSDELTTLLRRYN IPHGVPVVGSTRRLYEKKIFE YETQRRRLSPSSSAASSYS<br>FSDLNSTRGDADMYDLPKKE DALLYQSKGYNDYYEESYF TTRTYGEPESAGPSRAVRQS<br>VTSFPDADAFHHQVHDDLL SSSEEECKDRERPMYGRDSA YQSITHYRPVSASRSSLDS<br>YYPTSSSTFSMSSSSSSSW LTRRAIRPENRAPGAGLGQD |
| Specificity        | Recombinant fusion protein containing a sequence corresponding to amino acids 1-220 of human Emerin/Emerin/EMD (NP_000108.1).                                                                                                              |

### ADDITIONAL INFORMATION

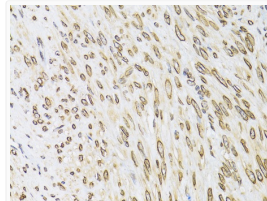
Note STRICTLY FOR FURTHER SCIENTIFIC RESEARCH USE ONLY (RUO). MUST NOT TO BE USED IN DIAGNOSTIC OR THERAPEUTIC APPLICATIONS.



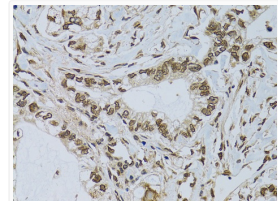
Confocal immunofluorescence analysis of U-2OS cells using Emerin/Emerin/EMD antibody (STJ115860) at dilution of 1:100. Blue: DAPI for nuclear staining.



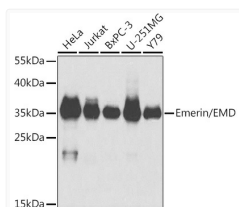
Immunofluorescence analysis of U-2 OS cells using Emerin/Emerin/EMD antibody (STJ115860) at dilution of 1:100. Blue: DAPI for nuclear staining.



Immunohistochemistry analysis of paraffin-embedded human uterine cancer using Emerin/Emerin/EMD antibody (STJ115860) at dilution of 1:100 (40x lens). Perform microwave antigen retrieval with 10 mM PBS buffer pH 7.2 before commencing with immunohistochemistry staining protocol.



Immunohistochemistry analysis of paraffin-embedded human gastric cancer using Emerin/Emerin/EMD antibody (STJ115860) at dilution of 1:100 (40x lens). Perform microwave antigen retrieval with 10 mM PBS buffer pH 7.2 before commencing with immunohistochemistry staining protocol.



Western blot analysis of extracts of various cell lines, using Emerin/Emerin/EMD antibody (STJ115860) at 1:10000 dilution. Secondary antibody: HRP Goat Anti-Rabbit IgG (H+L) (STJS000856) at 1:10000 dilution. Lysates/proteins: 25 µg per lane. Blocking buffer: 3% nonfat dry milk in TBST.