

Anti-CPT1C antibody (270-400) (STJ115788)

GENERAL INFORMATION

Product Type	Primary antibodies
Applications	WB/IF/ICC/ELISA
Host / Source	Rabbit
Reactivity	Human/Mouse/Rat

PRODUCT PROPERTIES

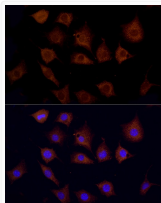
Clonality	Polyclonal
Concentration	Lot specific
Conjugation	Unconjugated
Purification	Affinity purification
Dilution Range	WB:1:2000-1:8000 IF/CC:1:50-1:200 ELISA:Recommended starting concentration is 1 Mu g/mL. Please optimize the concentration based on your specific assay requirements.
Formulation	PBS with 0.05% Proclin300, 50% Glycerol, pH 7.3.
Isotype	IgG
Molecular Weight	Protein Mw: 91kDa Observed Mw: 102kDa
Storage Instruction	Store at -20°C for up to 1 year from the date of receipt, and avoid repeat freeze-thaw cycles.

TARGET INFORMATION

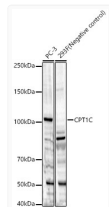
Gene ID	126129
Gene Symbol	CPT1C
UniProt ID	CPT1C_HUMAN
Immunogen Region	270-400
Immunogen Sequence	LYRHRLNRQEIPTLLMGMR PLCSAQYKIFNTTRIPGVQ KDYIRHLHDSQHVAVFHRGR FFRMGTHSRNSLLSPRALEQ QFQRILDDPSPACPHEEHLA ALTAAPRGTWAQVRTSLKTQ AAEALEAVEGA
Specificity	Recombinant fusion protein containing a sequence corresponding to amino acids 270-400 of human CPT1C (NP_001129524.1).

ADDITIONAL INFORMATION

Note STRICTLY FOR FURTHER SCIENTIFIC RESEARCH USE ONLY (RUO). MUST NOT TO BE USED IN DIAGNOSTIC OR THERAPEUTIC APPLICATIONS.



Immunofluorescence analysis of L929 using CPT1C antibody (STJ115788) at dilution of 1:100. Blue: DAPI for nuclear staining.



Western blot analysis of various lysates, using CPT1C Rabbit polyclonal antibody (STJ115788) at 1:7000 dilution. Secondary antibody: HRP Goat Anti-Rabbit IgG (H+L) (STJS000856) at 1:10000 dilution. Lysates/proteins: 25 Mu g per lane. Blocking buffer: 3% nonfat dry milk in TBST. Detection: ECL Basic Kit. Exposure time: 180s.