

Anti-SLC25A27 antibody (258-275) (STJ115776)

GENERAL INFORMATION

Product Type	Primary antibodies
Applications	WB/IF/ICC/ELISA
Host / Source	Rabbit
Reactivity	Human/Mouse/Rat

PRODUCT PROPERTIES

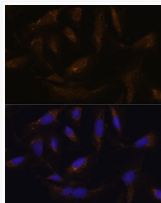
Clonality	Polyclonal
Concentration	Lot specific
Conjugation	Unconjugated
Purification	Affinity purification
Dilution Range	WB:1:500-1:2000 IF/CC:1:50-1:200 ELISA:Recommended starting concentration is 1 Mu g/mL. Please optimize the concentration based on your specific assay requirements.
Formulation	PBS with 0.01% Thimerosal, 50% Glycerol, pH 7.3.
Isotype	IgG
Molecular Weight	Protein Mw: 36kDa Observed Mw: 36kDa
Storage Instruction	Store at -20°C for up to 1 year from the date of receipt, and avoid repeat freeze-thaw cycles.

TARGET INFORMATION

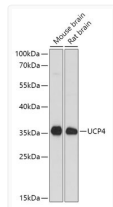
Gene ID	9481
Gene Symbol	SLC25A27
UniProt ID	UCP4_HUMAN
Immunogen Region	258-275
Immunogen Sequence	ALVNMGDLTTYDTVKHYLVL NTPLEDNIMTHGLSSLCSGL VASILGTPADVIKSRIMNQP RDKQGRGLLYKSSTDCLIQA VQGEGFMSLYKGFPLPSWLRM TPWSMVFWLTYEKIREMSGV SPF
Specificity	A synthetic peptide corresponding to a sequence within amino acids 201-300 of human SLC25A27 (NP_004268.3).

ADDITIONAL INFORMATION

Note **STRICTLY FOR FURTHER SCIENTIFIC RESEARCH USE ONLY (RUO). MUST NOT TO BE USED IN DIAGNOSTIC OR THERAPEUTIC APPLICATIONS.**



Immunofluorescence analysis of U-2 OS cells using SLC25A27 Rabbit polyclonal antibody (STJ115776) at dilution of 1:100. Secondary antibody: Cy3 Goat Anti-Rabbit IgG (H+L) at 1:500 dilution. Blue: DAPI for nuclear staining.



Western blot analysis of various lysates using SLC25A27 Rabbit polyclonal antibody (STJ115776) at 1:1000 dilution. Secondary antibody: HRP Goat Anti-Rabbit IgG (H+L) (STJS000856) at 1:10000 dilution. Lysates/proteins: 25 Mu g per lane. Blocking buffer: 3% nonfat dry milk in TBST. Detection: ECL Basic Kit. Exposure time: 90s.