

Anti-PSME4 antibody (1634-1843) (STJ115757)

GENERAL INFORMATION

Product Type	Primary antibodies
Applications	WB/IHC-P/ELISA
Host / Source	Rabbit
Reactivity	Human/Mouse/Rat

PRODUCT PROPERTIES

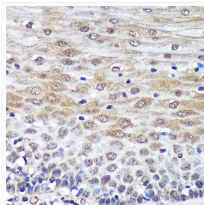
Clonality	Polyclonal
Concentration	Lot specific
Conjugation	Unconjugated
Purification	Affinity purification
Dilution Range	WB:1:500-1:2000 IHC-P:1:50-1:200 ELISA:Recommended starting concentration is 1 µg/mL. Please optimize the concentration based on your specific assay requirements.
Formulation	PBS with 0.01% Thimerosal, 50% Glycerol, pH 7.3.
Isotype	IgG
Molecular Weight	Protein Mw: 211kDa Observed Mw: 211kDa
Storage Instruction	Store at -20°C for up to 1 year from the date of receipt, and avoid repeat freeze-thaw cycles.

TARGET INFORMATION

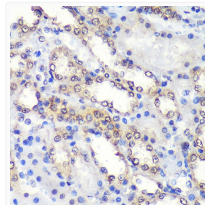
Gene ID	23198
Gene Symbol	PSME4
UniProt ID	PSME4_HUMAN
Immunogen Region	1634-1843
Immunogen Sequence	LYPHQVPLVLQVLKQTARSS SWHARYTVLTYLQTMVFYNL FIFLNNEAVKDIRWLVISL LEDEQLEVREMAATTL SGLL QCNFLTMDSPMQIHFEQLCK TKLPKRRKRDPSVSGDTIPS AELVKRHAGV LGLGACVLSS PYDVPTWMPQLLMNLSAHLN DPQPIEMTVKKTLSNFRRTH HDNWQEHHKQFTDDQLLVLT DLLVSPCYA
Specificity	Recombinant fusion protein containing a sequence corresponding to amino acids 1634-1843 of human PSME4 (NP_055429.2).

ADDITIONAL INFORMATION

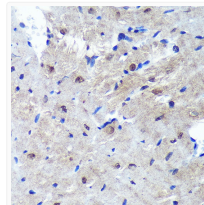
Note **STRICTLY FOR FURTHER SCIENTIFIC RESEARCH USE ONLY (RUO). MUST NOT TO BE USED IN DIAGNOSTIC OR THERAPEUTIC APPLICATIONS.**



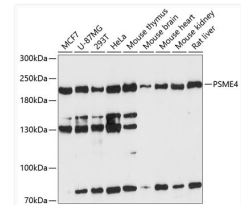
Immunohistochemistry analysis of PSME4 in paraffin-embedded Human esophageal using PSME4 Rabbit polyclonal antibody (STJ115757) at dilution of 1:100 (40x lens). Perform microwave antigen retrieval with 10 mM PBS buffer pH 7. 2 before commencing with immunohistochemistry staining protocol.



Immunohistochemistry analysis of PSME4 in paraffin-embedded Rat kidney using PSME4 Rabbit polyclonal antibody (STJ115757) at dilution of 1:100 (40x lens). Perform microwave antigen retrieval with 10 mM PBS buffer pH 7. 2 before commencing with immunohistochemistry staining protocol.



Immunohistochemistry analysis of PSME4 in paraffin-embedded Mouse heart using PSME4 Rabbit polyclonal antibody (STJ115757) at dilution of 1:100 (40x lens). Perform microwave antigen retrieval with 10 mM PBS buffer pH 7. 2 before commencing with immunohistochemistry staining protocol.



Western blot analysis of various lysates using PSME4 Rabbit polyclonal antibody (STJ115757) at 1:3000 dilution. Secondary antibody: HRP Goat Anti-Rabbit IgG (H+L) (STJS000856) at 1:10000 dilution. Lysates/proteins: 25 µg per lane. Blocking buffer: 3% nonfat dry milk in TBST. Detection: ECL Enhanced Kit. Exposure time: 90s.