

Anti-FGL2 antibody (24-140) (STJ115703)

GENERAL INFORMATION

Product Type	Primary antibodies
Applications	WB/ELISA
Host / Source	Rabbit
Reactivity	Human

PRODUCT PROPERTIES

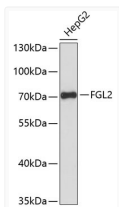
Clonality	Polyclonal
Concentration	Lot specific
Conjugation	Unconjugated
Purification	Affinity purification
Dilution Range	WB:1:500-1:2000 ELISA:Recommended starting concentration is 1 µg/mL. Please optimize the concentration based on your specific assay requirements.
Formulation	PBS with 0.01% Thimerosal, 50% Glycerol, pH 7.3.
Isotype	IgG
Molecular Weight	Protein Mw: 50kDa Observed Mw: 70kDa
Storage Instruction	Store at -20°C for up to 1 year from the date of receipt, and avoid repeat freeze-thaw cycles.

TARGET INFORMATION

Gene ID	10875
Gene Symbol	FGL2
UniProt ID	FGL2_HUMAN
Immunogen Region	24-140
Immunogen Sequence	NNETEEIKDERAKDVCPVRL ESRGKCEEAGECPYQVSLPP LTIQLPKQFSRIEEVFKEVQ NLKEIVNSLKKSCQDCKLQA DDNGDPGRNGLLLPSTGAPG EVGDNRVRELESEVNKL
Specificity	Recombinant fusion protein containing a sequence corresponding to amino acids 24-140 of human FGL2 (NP_006673.1).

ADDITIONAL INFORMATION

Note STRICTLY FOR FURTHER SCIENTIFIC RESEARCH USE ONLY (RUO). MUST NOT TO BE USED IN DIAGNOSTIC OR THERAPEUTIC APPLICATIONS.



Western blot analysis of lysates from HepG2 cells, using FGL2 Rabbit polyclonal antibody (STJ115703) at 1:3000 dilution. Secondary antibody: HRP Goat Anti-Rabbit IgG (H+L) (STJS000856) at 1:10000 dilution. Lysates/proteins: 25 µg per lane. Blocking buffer: 3% nonfat dry milk in TBST. Detection: ECL Basic Kit. Exposure time: 90s.