

Anti-SERPINB13 antibody (1-140) (STJ115695)

GENERAL INFORMATION

Product Type	Primary antibodies
Applications	WB/IF/ICC/ELISA
Host / Source	Rabbit
Reactivity	Human/Mouse/Rat

PRODUCT PROPERTIES

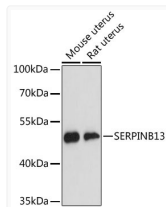
Clonality	Polyclonal
Concentration	Lot specific
Conjugation	Unconjugated
Purification	Affinity purification
Dilution Range	WB:1:500-1:2000 IF/CC:1:50-1:100 ELISA:Recommended starting concentration is 1 μ g/mL. Please optimize the concentration based on your specific assay requirements.
Formulation	PBS with 0.01% Thimerosal, 50% Glycerol, pH 7.3.
Isotype	IgG
Molecular Weight	Protein Mw: 44kDa Observed Mw: 44kDa
Storage Instruction	Store at -20°C for up to 1 year from the date of receipt, and avoid repeat freeze-thaw cycles.

TARGET INFORMATION

Gene ID	5275
Gene Symbol	SERPINB13
UniProt ID	SPB13_HUMAN
Immunogen Region	1-140
Immunogen Sequence	MDSLGAVSTRLGFDLFLKELK KTNDGNIFFPVGLTAIGM VLLGTRGATASQLEEVFHSE KETKSSRIKAEKEVIENTE AVHQFQKFLTEISKLTNDY ELNITNRLFGKTYLFLQKY LDYVEKYYHASLEPVDVNA
Specificity	Recombinant fusion protein containing a sequence corresponding to amino acids 1-140 of human SERPINB13 (NP_036529.1).

ADDITIONAL INFORMATION

Note **STRICTLY FOR FURTHER SCIENTIFIC RESEARCH USE ONLY (RUO). MUST NOT TO BE USED IN DIAGNOSTIC OR THERAPEUTIC APPLICATIONS.**



Western blot analysis of various lysates using SERPINB13 Rabbit polyclonal antibody (STJ115695) at 1:3000 dilution. Secondary antibody: HRP Goat Anti-Rabbit IgG (H+L) (STJS000856) at 1:10000 dilution. Lysates/proteins: 25 μ g per lane. Blocking buffer: 3% nonfat dry milk in TBST. Detection: ECL Basic Kit. Exposure time: 90s.