

## Anti-KLHDC3 antibody (1-382) (STJ115692)

### GENERAL INFORMATION

Product Type	Primary antibodies
Applications	WB/IF/ICC/ELISA
Host / Source	Rabbit
Reactivity	Human/Mouse/Rat

### PRODUCT PROPERTIES

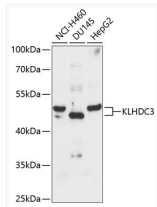
Clonality	Polyclonal
Concentration	Lot specific
Conjugation	Unconjugated
Purification	Affinity purification
Dilution Range	WB:1:1000-1:5000 IF/CC:1:50-1:200 ELISA:Recommended starting concentration is 1 Mu g/mL. Please optimize the concentration based on your specific assay requirements.
Formulation	PBS with 0.05% Proclin300, 50% Glycerol, pH 7.3.
Isotype	IgG
Molecular Weight	Protein Mw: 43kDa Observed Mw: 43kDa
Storage Instruction	Store at -20°C for up to 1 year from the date of receipt, and avoid repeat freeze-thaw cycles.

### TARGET INFORMATION

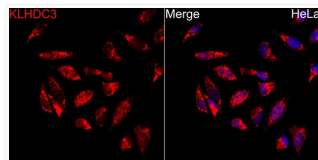
Gene ID	<a href="#">116138</a>
Gene Symbol	<a href="#">KLHDC3</a>
UniProt ID	<a href="#">KLDC3_HUMAN</a>
Immunogen Region	1-382
Immunogen Sequence	MLRWTVHLEGGPRRVNHAHV AVGHRVYSFGGYCSGEDYET LRQIDVHIFNAVSLRWTKLP PVKSAIRGQAPVVPYMRVYGH STVLIDDTVLLWGGRNDETEG ACNVLYAFDVNTHKWFTPRV SGTVPVGARDGHSACVLGKIM YIFGGYEQQADCFNSNDIHKL DTSTMTWTLICTKGSPPARWR DFHSATMLGSHMYVFGGRAD RFGPFHSNNEIYCNRIKRVFD TRTEAWLDCPPTPVLPPEGR
Specificity	Recombinant fusion protein containing a sequence corresponding to amino acids 1-382 of human KLHDC3 (NP_476502.1).

### ADDITIONAL INFORMATION

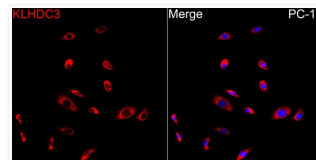
Note STRICTLY FOR FURTHER SCIENTIFIC RESEARCH USE ONLY (RUO). MUST NOT TO BE USED IN DIAGNOSTIC OR THERAPEUTIC APPLICATIONS.



Western blot analysis of extracts of various cell lines, using KLHDC3 antibody (STJ115692) at 1:3000 dilution. Secondary antibody: HRP Goat Anti-rabbit IgG (H+L) (STJS000856) at 1:10000 dilution. Lysates/proteins: 25 Mu g per lane. Blocking buffer: 3% non-fat dry milk in TBST. Detection: ECL Basic Kit. Exposure time: 90s.



Immunofluorescence analysis of HeLa cells using KLHDC3 rabbit polyclonal antibody (STJ115692) at dilution of 1:100 (40x lens). Secondary antibody: Cy3 Goat Anti-rabbit IgG (H+L) at 1:500 dilution. Blue: DAPI for nuclear staining.



Immunofluorescence analysis of PC-12 cells using KLHDC3 rabbit polyclonal antibody (STJ115692) at dilution of 1:100 (40x lens). Secondary antibody: Cy3 Goat Anti-rabbit IgG (H+L) at 1:500 dilution. Blue: DAPI for nuclear staining.