

Anti-PIH1D1 antibody (1-290) (STJ115672)

GENERAL INFORMATION

Product Type	Primary antibodies
Applications	WB/ELISA
Host / Source	Rabbit
Reactivity	Human

PRODUCT PROPERTIES

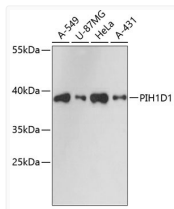
Clonality	Polyclonal
Concentration	Lot specific
Conjugation	Unconjugated
Purification	Affinity purification
Dilution Range	WB:1:500-1:2000 ELISA:Recommended starting concentration is 1 μ g/mL. Please optimize the concentration based on your specific assay requirements.
Formulation	PBS with 0.01% Thimerosal, 50% Glycerol, pH 7.3.
Isotype	IgG
Molecular Weight	Protein Mw: 32kDa Observed Mw: 38kDa
Storage Instruction	Store at -20°C for up to 1 year from the date of receipt, and avoid repeat freeze-thaw cycles.

TARGET INFORMATION

Gene ID	55011
Gene Symbol	PIH1D1
UniProt ID	PIHD1_HUMAN
Immunogen Region	1-290
Immunogen Sequence	MANPKLLGMGLSEAEIAGD SARFEELLLQASKELQQAQT TRPESTQIQPQPGFCIKTNS SEGKVFINICHSPSIPPPAD VTEEEELQMLEEDQAGFRIP MSLGEPHAELDAKGGQCTAY DVAVNSDFYRRMQNSDFLRE LVITIAREGLEDKYNLQLNP EWRMMKNRPFMGSISQQNIR SEQRPRIQELGDLYTPAPGR AESGPEKPHLNLWLEAPDLL LAEVDLPKLDGALGLSLEI
Specificity	Recombinant fusion protein containing a sequence corresponding to amino acids 1-290 of human PIH1D1 (NP_060386.1).

ADDITIONAL INFORMATION

Note **STRICTLY FOR FURTHER SCIENTIFIC RESEARCH USE ONLY (RUO). MUST NOT TO BE USED IN DIAGNOSTIC OR THERAPEUTIC APPLICATIONS.**



Western blot analysis of various lysates using PIH1D1 Rabbit pAb (STJ115672) at 1:3000 dilution.

Secondary antibody: HRP-conjugated Goat anti-Rabbit IgG (H+L) (STJS000856) at 1:10000 dilution.

Lysates/proteins: 25 μ g per lane.

Blocking buffer: 3% nonfat dry milk in TBST.

Detection: ECL Basic Kit

Exposure time: 90s.