

Anti-DAPP1 antibody (100-273) (STJ115670)

GENERAL INFORMATION

Product Type	Primary antibodies
Applications	WB/IF/ICC/ELISA
Host / Source	Rabbit
Reactivity	Human/Mouse/Rat

PRODUCT PROPERTIES

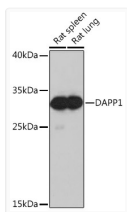
Clonality	Polyclonal
Concentration	Lot specific
Conjugation	Unconjugated
Purification	Affinity purification
Dilution Range	WB:1:500-1:2000 IF/CC:1:50-1:200 ELISA:Recommended starting concentration is 1 μ g/mL. Please optimize the concentration based on your specific assay requirements.
Formulation	PBS with 0.01% Thimerosal, 50% Glycerol, pH 7.3.
Isotype	IgG
Molecular Weight	Protein Mw: 32kDa Observed Mw: 28kDa
Storage Instruction	Store at -20°C for up to 1 year from the date of receipt, and avoid repeat freeze-thaw cycles.

TARGET INFORMATION

Gene ID	27071
Gene Symbol	DAPP1
UniProt ID	DAPP1_HUMAN
Immunogen Region	100-273
Immunogen Sequence	SSLKDFVKHFANQPLIGSET GTLMVLKHPYPRKVEPSIY ESVRVHTAMQTGRTEDDLVP TAPSLGKTEGYLTKQGGGLVK TWKTRWFTLHRNELKYFKDQ MSPEPIRILDLTECSAVQFD YSQERVNCFCLVFPFRFYFL CAKTGVEADEWIKILRWKLS QIRKQLNQEGGTIR
Specificity	A synthetic peptide corresponding to a sequence within amino acids 100-273 of human DAPP1 (NP_055210.2).

ADDITIONAL INFORMATION

Note STRICTLY FOR FURTHER SCIENTIFIC RESEARCH USE ONLY (RUO). MUST NOT TO BE USED IN DIAGNOSTIC OR THERAPEUTIC APPLICATIONS.



Western blot analysis of various lysates using DAPP1 Rabbit polyclonal antibody (STJ115670) at 1:1000 dilution. Secondary antibody: HRP Goat Anti-Rabbit IgG (H+L) (STJS000856) at 1:10000 dilution. Lysates/proteins: 25 μ g per lane. Blocking buffer: 3% nonfat dry milk in TBST. Detection: ECL Basic Kit. Exposure time: 10s.