

Anti-MDFI antibody (1-160) (STJ115663)

GENERAL INFORMATION

Product Type	Primary antibodies
Applications	WB/IF/ICC/ELISA
Host / Source	Rabbit
Reactivity	Human/Mouse/Rat

PRODUCT PROPERTIES

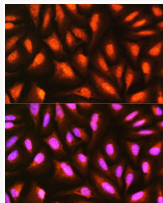
Clonality	Polyclonal
Concentration	Lot specific
Conjugation	Unconjugated
Purification	Affinity purification
Dilution Range	WB:1:500-1:2000 IF/CC:1:50-1:200 ELISA:Recommended starting concentration is 1 µg/mL. Please optimize the concentration based on your specific assay requirements.
Formulation	PBS with 0.01% Thimerosal, 50% Glycerol, pH 7.3.
Isotype	IgG
Molecular Weight	Protein Mw: 25kDa Observed Mw: 35kDa
Storage Instruction	Store at -20°C for up to 1 year from the date of receipt, and avoid repeat freeze-thaw cycles.

TARGET INFORMATION

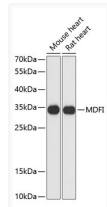
Gene ID	4188
Gene Symbol	MDFI
UniProt ID	MDFI_HUMAN
Immunogen Region	1-160
Immunogen Sequence	MYQVSGQRPSGCDAPYGAPS AAPGPAQTLSELLPGLEVVTG STHPAEAAPEEGSLEEAATP MPQNGGFGIPQGLDSTDLDV PTEAVTCQPQGNPLGCTPLL PNDSGHPSELGGTRRAGNGA LGGPKAHRKLQTHPSLASQG SKKSKSSSKSTTSQIPLQAQ
Specificity	Recombinant fusion protein containing a sequence corresponding to amino acids 1-160 of human MDFI (NP_005577.1).

ADDITIONAL INFORMATION

Note **STRICTLY FOR FURTHER SCIENTIFIC RESEARCH USE ONLY (RUO). MUST NOT TO BE USED IN DIAGNOSTIC OR THERAPEUTIC APPLICATIONS.**



Immunofluorescence analysis of U-2 OS cells using MDFI Rabbit polyclonal antibody (STJ115663) at dilution of 1:100 (40x lens). Secondary antibody: Cy3 Goat Anti-Rabbit IgG (H+L) at 1:500 dilution. Blue: DAPI for nuclear staining.



Western blot analysis of various lysates using MDFI Rabbit polyclonal antibody (STJ115663) at 1:3000 dilution.