

## Anti-CLIC1 antibody (42-241) (STJ115639)

### GENERAL INFORMATION

Product Type	Primary antibodies
Applications	WB/IF/ICC/ELISA
Host / Source	Rabbit
Reactivity	Human/Mouse/Rat

### PRODUCT PROPERTIES

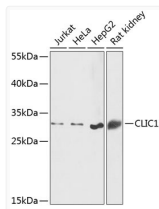
Clonality	Polyclonal
Concentration	Lot specific
Conjugation	Unconjugated
Purification	Affinity purification
Dilution Range	WB:1:500-1:2000 IF/CC:1:50-1:200 ELISA:Recommended starting concentration is 1 $\mu$ g/mL. Please optimize the concentration based on your specific assay requirements.
Formulation	PBS with 0.09% Sodium Azide, 50% Glycerol, pH7.3.
Isotype	IgG
Molecular Weight	Protein Mw: 27kDa Observed Mw: 27kDa
Storage Instruction	Store at -20°C for up to 1 year from the date of receipt, and avoid repeat freeze-thaw cycles.

### TARGET INFORMATION

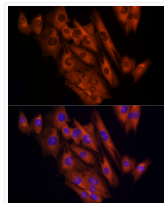
Gene ID	<a href="#">1192</a>
Gene Symbol	<a href="#">CLIC1</a>
UniProt ID	<a href="#">CLIC1_HUMAN</a>
Immunogen Region	42-241
Immunogen Sequence	NVTTVDTKRRRTETVQKLCPG GQLPFLLYGTEVHTDTNKIE EFLEAVLCPPRYPKLAALNP ESNTAGLDIFAKFSAYIKNS NPALNDNLEKGLLKALKVLD NYLTSPLPEEVEDETSAEDEG VSQRKFLDGNELTLADCNLL PKLHIVQVVCCKYRGFTIPE AFRGVHRYLSNAYAREEFAS TCPDDEEIELAYEQVAKALK
Specificity	Recombinant fusion protein containing a sequence corresponding to amino acids 42-241 of human CLIC1 (NP_001279.2).

### ADDITIONAL INFORMATION

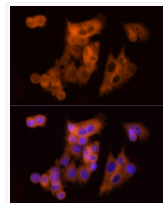
Note STRICTLY FOR FURTHER SCIENTIFIC RESEARCH USE ONLY (RUO). MUST NOT TO BE USED IN DIAGNOSTIC OR THERAPEUTIC APPLICATIONS.



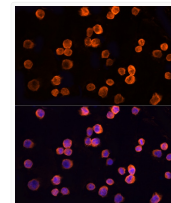
Western blot analysis of extracts of various cell lines, using CLIC1 antibody (STJ115639) at 1:1000 dilution. Secondary antibody: HRP Goat Anti-rabbit IgG (H+L) (STJS000856) at 1:10000 dilution. Lysates/proteins: 25  $\mu$ g per lane. Blocking buffer: 3% non-fat dry milk in TBST. Detection: ECL Basic Kit. Exposure time: 60s.



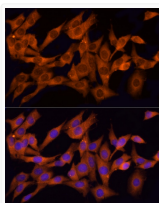
Immunofluorescence analysis of C2C12 cells using CLIC1 rabbit polyclonal antibody (STJ115639) at dilution of 1:100 (40x lens). Blue: DAPI for nuclear staining.



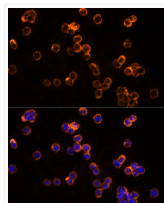
Immunofluorescence analysis of HepG2 cells using CLIC1 rabbit polyclonal antibody (STJ115639) at dilution of 1:100 (40x lens). Blue: DAPI for nuclear staining.



Immunofluorescence analysis of K-562 cells using CLIC1 rabbit polyclonal antibody (STJ115639) at dilution of 1:100 (40x lens). Blue: DAPI for nuclear staining.



Immunofluorescence analysis of PC-12 cells using CLIC1 rabbit polyclonal antibody (STJ115639) at dilution of 1:100 (40x lens). Blue: DAPI for nuclear staining.



Immunofluorescence analysis of THP-1 cells using CLIC1 rabbit polyclonal antibody (STJ115639) at dilution of 1:100 (40x lens). Blue: DAPI for nuclear staining.