

Anti-IRF8 antibody (137-426) (STJ115632)

GENERAL INFORMATION

Product Type	Primary antibodies
Applications	WB/ELISA
Host / Source	Rabbit
Reactivity	Human

PRODUCT PROPERTIES

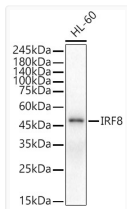
Clonality	Polyclonal
Concentration	Lot specific
Conjugation	Unconjugated
Purification	Affinity purification
Dilution Range	WB:1:100-1:500 ELISA:Recommended starting concentration is 1 μ g/mL. Please optimize the concentration based on your specific assay requirements.
Formulation	PBS with 0.02% Sodium Azide, 50% Glycerol, pH 7.3.
Isotype	IgG
Molecular Weight	Protein Mw: 48kDa Observed Mw: 50kDa
Storage Instruction	Store at -20°C for up to 1 year from the date of receipt, and avoid repeat freeze-thaw cycles.

TARGET INFORMATION

Gene ID	3394
Gene Symbol	IRF8
UniProt ID	IRF8_HUMAN
Immunogen Region	137-426
Immunogen Sequence	ECGRSEIDELIKEPSVDDYD GMIKRSPSPPEACRSQLLPD WWAQQPSTGVPLVTGYTTYD AHHSQAFSQMVISFYGGKLV GQATTTTCPEGCRSLSLSQPLG PGTKLYGPEGLVRFPPAD AIPSERQRQVTRKLFGLHLER GVLLHSSRQGVFVKRLCQGR VFCSGNAVVCCKGRPNKLERD EVVQVFDTSQFFRELQQFYD SQGRLPDGRVVLFCGEEFPD MAPLRSKLLVQIEQLYVR
Specificity	Recombinant fusion protein containing a sequence corresponding to amino acids 137-426 of human IRF8 (NP_002154.1).

ADDITIONAL INFORMATION

Note **STRICTLY FOR FURTHER SCIENTIFIC RESEARCH USE ONLY (RUO). MUST NOT TO BE USED IN DIAGNOSTIC OR THERAPEUTIC APPLICATIONS.**



Western blot analysis of lysates from HL-60 cells, using IRF8 Rabbit polyclonal antibody (STJ115632) at 1:400 dilution. Secondary antibody: HRP Goat Anti-Rabbit IgG (H+L) (STJS000856) at 1:10000 dilution. Lysates/proteins: 25 μ g per lane. Blocking buffer: 3% nonfat dry milk in TBST. Detection: ECL Basic Kit. Exposure time: 60s.