

Anti-GLB1 antibody (1-349) (STJ115624)

GENERAL INFORMATION

Product Type	Primary antibodies
Applications	WB/ELISA
Host / Source	Rabbit
Reactivity	Human/Mouse/Rat

PRODUCT PROPERTIES

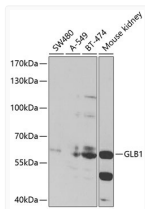
Clonality	Polyclonal
Concentration	Lot specific
Conjugation	Unconjugated
Purification	Affinity purification
Dilution Range	WB:1:500-1:2000 ELISA:Recommended starting concentration is 1 Mu g/mL. Please optimize the concentration based on your specific assay requirements.
Formulation	PBS with 0.02% Sodium Azide, 50% Glycerol, pH 7.3.
Isotype	IgG
Molecular Weight	Protein Mw: 76kDa Observed Mw: 62kDa
Storage Instruction	Store at-20°C for up to 1 year from the date of receipt, and avoid repeat freeze-thaw cycles.

TARGET INFORMATION

Gene ID	2720
Gene Symbol	GLB1
UniProt ID	BGAL_HUMAN
Immunogen Region	1-349
Immunogen Sequence	TSYDYDAPLSEAGDLTEKYF ALRNIIQKFEKVEGPIPPS TPKFAYGKVTLEKLKTVGAA LDILCPGPIKSLYPLTFIQ VKQHYGFVLYRRTLLPQDCSN PAPLSSPLNGVHDRAYVAVD GIPQGVLERNNVITLNTGK AGATLDLLVENMGRVNYGAY INDFKGLVSNLTLSSNILTD WTIFPLDTEDAVCCHLGGWG HRDSGHHDEAWAHNSSNYTL PAFYMGNFISIPSGIPDLPQ
Specificity	Recombinant fusion protein containing a sequence corresponding to amino acids 1-270 of human GLB1 (NP_000395.3).

ADDITIONAL INFORMATION

Note **STRICTLY FOR FURTHER SCIENTIFIC RESEARCH USE ONLY (RUO). MUST NOT TO BE USED IN DIAGNOSTIC OR THERAPEUTIC APPLICATIONS.**



Western blot analysis of extracts of various cell lines, using GLB1 antibody (STJ115624) at 1:1000 dilution. Secondary antibody: HRP Goat Anti-Rabbit IgG (H+L) (STJS000856) at 1:10000 dilution. Lysates/proteins: 25 Mu g per lane. Blocking buffer: 3% nonfat dry milk in TBST.