

Anti-IFIH1 antibody (1-1025) (STJ115604)

GENERAL INFORMATION

Product Type	Primary antibodies
Applications	WB/IHC-P/IF/ICC/ELISA
Host / Source	Rabbit
Reactivity	Human/Mouse/Rat

PRODUCT PROPERTIES

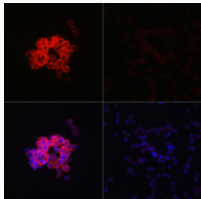
Clonality	Polyclonal
Concentration	Lot specific
Conjugation	Unconjugated
Purification	Affinity purification
Dilution Range	WB:1:500-1:1000 IHC-P:1:50-1:200 IF/CC:1:50-1:200 ELISA:Recommended starting concentration is 1 μ g/mL. Please optimize the concentration based on your specific assay requirements.
Formulation	PBS with 0.09% Sodium Azide, 50% Glycerol, pH 7.3.
Isotype	IgG
Molecular Weight	Protein Mw: 117kDa Observed Mw: 140kDa
Storage Instruction	Store at -20°C for up to 1 year from the date of receipt, and avoid repeat freeze-thaw cycles.

TARGET INFORMATION

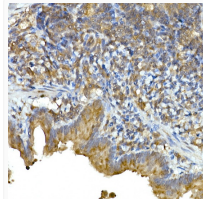
Gene ID	64135
Gene Symbol	IFIH1
UniProt ID	IFIH1_HUMAN
Immunogen Region	1-1025
Immunogen Sequence	MSNGYSTDENFRYLISCFRA RVKMYIQVEPVLDTLFLPA EVKEIQRTVATSGNMQAVE LLLSTLEKGVVHLGWTRFV EALRRTGSPLAARYMNPET DLPSPSFENAHDEYLQLLNL LQPTLVDKLLVRDVLKDCME EELLTIEDRNRIAAAENNGN ESGVRELLKRIVQKENWFSA FLNVLRTQGNNELVQELTGS DCSES
Specificity	Recombinant fusion protein containing a sequence corresponding to amino acids 1-205 of human IFIH1 (NP_071451.2).

ADDITIONAL INFORMATION

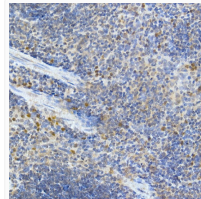
Note **STRICTLY FOR FURTHER SCIENTIFIC RESEARCH USE ONLY (RUO). MUST NOT TO BE USED IN DIAGNOSTIC OR THERAPEUTIC APPLICATIONS.**



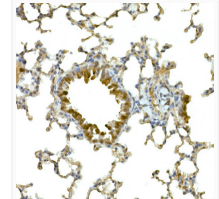
Immunofluorescence analysis of THP-1 treated with LPS (32h) and THP-1 cells using IFIH1 Rabbit polyclonal antibody (STJ115604) at dilution of 1:100 (40x lens). Blue: DAPI for nuclear staining.



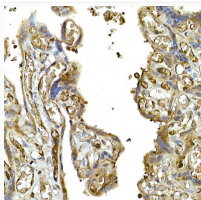
Immunohistochemistry analysis of paraffin-embedded rat lung using IFIH1 Rabbit polyclonal antibody (STJ115604) at dilution of 1:50 (40x lens). Perform high pressure antigen retrieval with 10 mM citrate buffer pH 6.0 before commencing with immunohistochemistry staining protocol.



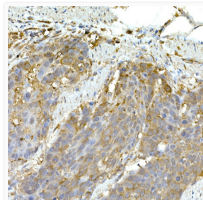
Immunohistochemistry analysis of paraffin-embedded mouse spleen using IFIH1 Rabbit polyclonal antibody (STJ115604) at dilution of 1:50 (40x lens). Perform high pressure antigen retrieval with 10 mM citrate buffer pH 6.0 before commencing with immunohistochemistry staining protocol.



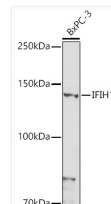
Immunohistochemistry analysis of paraffin-embedded mouse lung using IFIH1 Rabbit polyclonal antibody (STJ115604) at dilution of 1:50 (40x lens). Perform high pressure antigen retrieval with 10 mM citrate buffer pH 6.0 before commencing with immunohistochemistry staining protocol.



Immunohistochemistry analysis of paraffin-embedded human placenta using IFIH1 Rabbit polyclonal antibody (STJ115604) at dilution of 1:50 (40x lens). Perform high pressure antigen retrieval with 10 mM citrate buffer pH 6.0 before commencing with immunohistochemistry staining protocol.



Immunohistochemistry analysis of paraffin-embedded human esophageal cancer using IFIH1 Rabbit polyclonal antibody (STJ115604) at dilution of 1:50 (40x lens). Perform high pressure antigen retrieval with 10 mM citrate buffer pH 6.0 before commencing with immunohistochemistry staining protocol.



Western blot analysis of extracts of BxPC-3 cells, using IFIH1 antibody (STJ115604) at 1:1000 dilution. Secondary antibody: HRP Goat Anti-Rabbit IgG (H+L) (STJS000856) at 1:10000 dilution. Lysates/proteins: 25 μ g per lane. Blocking buffer: 3% nonfat dry milk in TBST. Detection: ECL Basic Kit. Exposure time: 180s.