

Anti-PSMB2 antibody (1-201) (STJ115589)

GENERAL INFORMATION

Product Type	Primary antibodies
Applications	WB/IHC-P/IF/ICC/IP/ELISA
Host / Source	Rabbit
Reactivity	Human/Rat

PRODUCT PROPERTIES

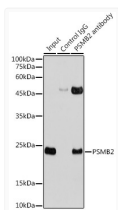
Clonality	Polyclonal
Concentration	Lot specific
Conjugation	Unconjugated
Purification	Affinity purification
Dilution Range	WB:1:500-1:2000 IHC-P:1:50-1:200 IF/ICC:1:50-1:200 IP:0.5 Mu g-4 Mu g antibody for 200 Mu g-400 Mu g extracts of whole cells ELISA:Recommended starting concentration is 1 Mu g/mL. Please optimize the concentration based on your specif
Formulation	PBS with 0.02% Sodium Azide, 50% Glycerol, pH 7.3.
Isotype	IgG
Molecular Weight	Protein Mw: 23kDa Observed Mw: 23kDa
Storage Instruction	Store at-20°C for up to 1 year from the date of receipt, and avoid repeat freeze-thaw cycles.

TARGET INFORMATION

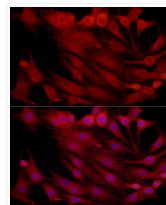
Gene ID	5690
Gene Symbol	PSMB2
UniProt ID	PSB2_HUMAN
Immunogen Region	1-201
Immunogen Sequence	MEYLIQIQPDYVLVASDRV AASNIVQMKDDHDKMFKMSE KILLLCVGEAGDTVQFAEYI QKNVQLYKMRNGYELSPATAA ANFTRRNLDCLRSRTPYHV NLLLAGYDEHEGPALYYMDY LAALAKAPFAAHGYGAFRTL SILDRYYTPTISRERAVELL RKCLEELQKRFINLPTFSV RIIDKNGIHLDLNI SFPKQG S
Specificity	Recombinant fusion protein containing a sequence corresponding to amino acids 1-201 of human PSMB2 (NP_002785.1).

ADDITIONAL INFORMATION

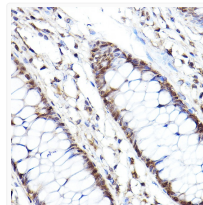
Note STRICTLY FOR FURTHER SCIENTIFIC RESEARCH USE ONLY (RUO). MUST NOT TO BE USED IN DIAGNOSTIC OR THERAPEUTIC APPLICATIONS.



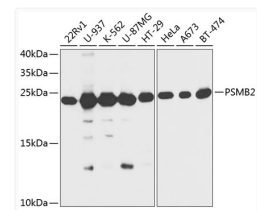
Immunoprecipitation analysis of 300 Mu g extracts of HeLa cells using 3 Mu g PSMB2 antibody (STJ115589). Western blot was performed from the immunoprecipitate using PSMB2 antibody (STJ115589) at a dilution of 1:1000.



Immunofluorescence analysis of C6 cells using PSMB2 Rabbit polyclonal antibody (STJ115589) at dilution of 1:100 (40x lens). Secondary antibody: Cy3 Goat Anti-Rabbit IgG (H+L) at 1:500 dilution. Blue: DAPI for nuclear staining.



Immunohistochemistry analysis of PSMB2 in paraffin-embedded human colon using PSMB2 Rabbit polyclonal antibody (STJ115589) at dilution of 1:100 (40x lens). Perform high pressure antigen retrieval with 10 mM citrate buffer pH 6, 0 before commencing with immunohistochemistry staining protocol.



Western blot analysis of various lysates using PSMB2 Rabbit polyclonal antibody (STJ115589) at 1:1000 dilution. Secondary antibody: HRP Goat Anti-Rabbit IgG (H+L) (STJS000856) at 1:10000 dilution. Lysates/proteins: 25 Mu g per lane. Blocking buffer: 3% nonfat dry milk in TBST. Detection: ECL Basic Kit. Exposure time: 15s.