

Anti-TFAM antibody (100-200) (STJ115513)

GENERAL INFORMATION

Product Type	Primary antibodies
Applications	WB/IHC-P/IF/ICC/ELISA/ChIP
Host / Source	Rabbit
Reactivity	Human/Mouse/Rat

PRODUCT PROPERTIES

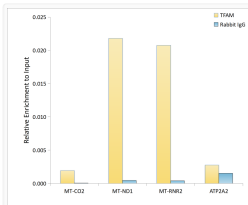
Clonality	Polyclonal
Concentration	Lot specific
Conjugation	Unconjugated
Purification	Affinity purification
Dilution Range	WB:1:500-1:1000 IHC-P:1:50-1:200 IF/CC:1:50-1:200 ELISA:Recommended starting concentration is 1 Mu g/mL. Please optimize the concentration based on your specific assay requirements. ChIP:5 Mu g antibody for 10 Mu g-15 Mu g of Chromat
Formulation	PBS with 0.05% Proclin300, 50% Glycerol, pH 7.3.
Isotype	IgG
Molecular Weight	Protein Mw: 29kDa Observed Mw: 25kDa
Storage Instruction	Store at -20°C for up to 1 year from the date of receipt, and avoid repeat freeze-thaw cycles.

TARGET INFORMATION

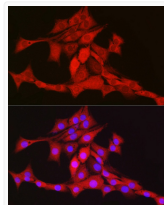
Gene ID	7019
Gene Symbol	TFAM
UniProt ID	TFAM_HUMAN
Immunogen Region	100-200
Immunogen Sequence	QDAYRAEWQVYKEEISRFKE QLTPSQIMSLEKEIMDKHLK RKAMTKKKELTLLGKPKRPR SAYNVVVAERFQEAQGDSPQ EKLLKTVKENWKNLSDSEKEL Y
Specificity	A synthetic peptide corresponding to a sequence within amino acids 100-200 of human TFAM (NP_003192.1).

ADDITIONAL INFORMATION

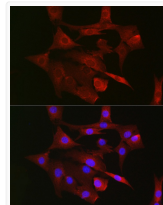
Note **STRICTLY FOR FURTHER SCIENTIFIC RESEARCH USE ONLY (RUO). MUST NOT TO BE USED IN DIAGNOSTIC OR THERAPEUTIC APPLICATIONS.**



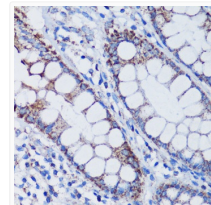
Chromatin immunoprecipitation analysis of extracts of K-562 cells, using TFAM antibody (STJ115513) and rabbit IgG. The amount of immunoprecipitated DNA was checked by quantitative PCR. Histogram was constructed by the ratios of the immunoprecipitated DNA to the input.



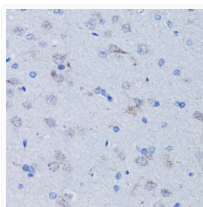
Immunofluorescence analysis of PC-12 cells using TFAM Rabbit polyclonal antibody (STJ115513) at dilution of 1:100 (40x lens). Secondary antibody: Cy3 Goat Anti-Rabbit IgG (H+L) at 1:500 dilution. Blue: DAPI for nuclear staining.



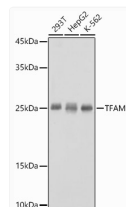
Immunofluorescence analysis of NIH/3T3 cells using TFAM Rabbit polyclonal antibody (STJ115513) at dilution of 1:100 (40x lens). Secondary antibody: Cy3 Goat Anti-Rabbit IgG (H+L) at 1:500 dilution. Blue: DAPI for nuclear staining.



Immunohistochemistry analysis of TFAM in paraffin-embedded human colon using TFAM Rabbit polyclonal antibody (STJ115513) at dilution of 1:100 (40x lens). Perform microwave antigen retrieval with 10 mM PBS buffer pH 7.2 before commencing with immunohistochemistry staining protocol.



Immunohistochemistry analysis of TFAM in paraffin-embedded rat brain using TFAM Rabbit polyclonal antibody (STJ115513) at dilution of 1:100 (40x lens). Perform microwave antigen retrieval with 10 mM PBS buffer pH 7.2 before commencing with immunohistochemistry staining protocol.



Western blot analysis of various lysates using TFAM Rabbit polyclonal antibody (STJ115513) at 1:1000 dilution. Secondary antibody: HRP Goat Anti-Rabbit IgG (H+L) (STJS000856) at 1:10000 dilution. Lysates/proteins: 25 Mu g per lane. Blocking buffer: 3% nonfat dry milk in TBST. Detection: ECL Basic Kit. Exposure time: 1s.