

Anti-RPS3 antibody (1-243) (STJ115504)

GENERAL INFORMATION

Product Type	Primary antibodies
Applications	WB/IF/ICC/ELISA
Host / Source	Rabbit
Reactivity	Human/Mouse/Rat

PRODUCT PROPERTIES

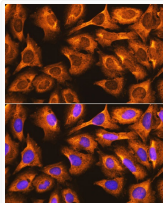
Clonality	Polyclonal
Concentration	Lot specific
Conjugation	Unconjugated
Purification	Affinity purification
Dilution Range	WB:1:500-1:2000 IF/CC:1:50-1:200 ELISA:Recommended starting concentration is 1 μ g/mL. Please optimize the concentration based on your specific assay requirements.
Formulation	PBS with 0.02% Sodium Azide, 50% Glycerol, pH 7.3.
Isotype	IgG
Molecular Weight	Protein Mw: 27kDa Observed Mw: 27kDa
Storage Instruction	Store at -20°C for up to 1 year from the date of receipt, and avoid repeat freeze-thaw cycles.

TARGET INFORMATION

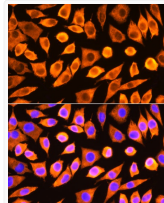
Gene ID	6188
Gene Symbol	RPS3
UniProt ID	RS3_HUMAN
Immunogen Region	1-243
Immunogen Sequence	MAVQISKRKRKFVADGIFKAE LNEFLTRELAEDGYSGVEVR VTPTRTEIILATRTQNVLG EKGRRIRELTAVVQKRFGFP EGSVELYAEKVATRGLCAIA QAESLRYKLLGGLAVRRACY GVLRFIMESGAKGCEVVVSG KLRGQRAKSMKFVDGLMIHS GDPVNYVDTAVRHVLLRQG VLGKIKVIMLPWDPTGKIGP KKPLPDHVSIVEPKDEILPT TPISQKGGKPEPPAMPQP
Specificity	Recombinant fusion protein containing a sequence corresponding to amino acids 1-243 of human RPS3 (NP_000996.2).

ADDITIONAL INFORMATION

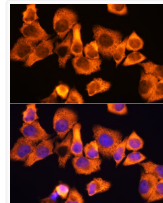
Note STRICTLY FOR FURTHER SCIENTIFIC RESEARCH USE ONLY (RUO). MUST NOT TO BE USED IN DIAGNOSTIC OR THERAPEUTIC APPLICATIONS.



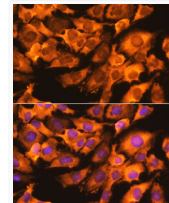
Immunofluorescence analysis of U-2 OS cells using RPS3 antibody (STJ115504) at dilution of 1:100. Blue: DAPI for nuclear staining.



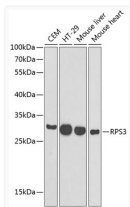
Immunofluorescence analysis of L929 cells using RPS3 antibody (STJ115504) at dilution of 1:100. Blue: DAPI for nuclear staining.



Immunofluorescence analysis of HeLa cells using RPS3 antibody (STJ115504) at dilution of 1:100. Blue: DAPI for nuclear staining.



Immunofluorescence analysis of C6 cells using RPS3 antibody (STJ115504) at dilution of 1:100. Blue: DAPI for nuclear staining.



Western blot analysis of extracts of various cell lines, using RPS3 antibody (STJ115504) at 1:1000 dilution. Secondary antibody: HRP Goat Anti-Rabbit IgG (H+L) (STJS000856) at 1:10000 dilution. Lysates/proteins: 25 μ g per lane. Blocking buffer: 3% nonfat dry milk in TBST.