

Anti-RPL11 antibody (1-177) (STJ115503)

GENERAL INFORMATION

Product Type	Primary antibodies
Applications	IF/ICC/ELISA
Host / Source	Rabbit
Reactivity	Human

PRODUCT PROPERTIES

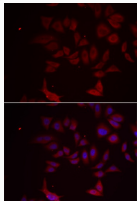
Clonality	Polyclonal
Concentration	Lot specific
Conjugation	Unconjugated
Purification	Affinity purification
Dilution Range	IF/ICC:1:50-1:200 ELISA:Recommended starting concentration is 1 µg/mL. Please optimize the concentration based on your specific assay requirements.
Formulation	PBS with 0.02% Sodium Azide, 50% Glycerol, pH 7.3.
Isotype	IgG
Molecular Weight	Protein Mw: 20kDa Observed Mw:
Storage Instruction	Store at -20°C for up to 1 year from the date of receipt, and avoid repeat freeze-thaw cycles.

TARGET INFORMATION

Gene ID	6135
Gene Symbol	RPL11
UniProt ID	RL11_HUMAN
Immunogen Region	1-177
Immunogen Sequence	MADQGEKENPMRELRIKLC LNICVGESGDLTRAALKVLE QLTGQTPVFSKARYTVRSFG IRRNEKIAVHCTVRGAKAEE ILEKGLKVREYELRKNNFSD TGNFGFGIQEHIDLGIKYDP SIGIYGLDFYVVLGRPGFSI ADKKRRRTGCIGAKHRISKEE AMRWFQQKYDGIILPGK
Specificity	Recombinant fusion protein containing a sequence corresponding to amino acids 1-177 of human RPL11 (NP_001186731.1).

ADDITIONAL INFORMATION

Note STRICTLY FOR FURTHER SCIENTIFIC RESEARCH USE ONLY (RUO). MUST NOT TO BE USED IN DIAGNOSTIC OR THERAPEUTIC APPLICATIONS.



Immunofluorescence analysis of MCF-7 cells using RPL11 antibody (STJ115503). Blue: DAPI for nuclear staining.