

## Anti-PVALB antibody (1-110) (STJ115499)

### GENERAL INFORMATION

Product Type	Primary antibodies
Applications	WB/IHC-P/IF/ICC/ELISA
Host / Source	Rabbit
Reactivity	Human/Mouse/Rat

### PRODUCT PROPERTIES

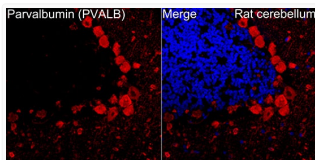
Clonality	Polyclonal
Concentration	Lot specific
Conjugation	Unconjugated
Purification	Affinity purification
Dilution Range	WB:1:500-1:1000 IHC-P:1:50-1:200 IF/ICC:1:50-1:200 ELISA:Recommended starting concentration is 1 Mu g/mL. Please optimize the concentration based on your specific assay requirements.
Formulation	PBS with 0.09% Sodium Azide, 50% Glycerol, pH 7.3.
Isotype	IgG
Molecular Weight	Protein Mw: 12kDa Observed Mw: 15kDa
Storage Instruction	Store at -20°C for up to 1 year from the date of receipt, and avoid repeat freeze-thaw cycles.

### TARGET INFORMATION

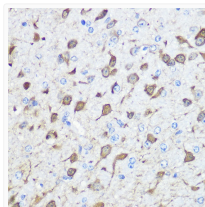
Gene ID	<a href="#">5816</a>
Gene Symbol	<a href="#">PVALB</a>
UniProt ID	<a href="#">PRVA_HUMAN</a>
Immunogen Region	1-110
Immunogen Sequence	MSMTDLLNAEDIKKAVGAFS ATDSFDHKKFFQMVGLKSKS ADDVKKVFHMLDKDKSGFIE EDELGFIKGFSPDARDLSA KETKMLMAAGDKDGDGKIGV DEFSTLVAES
Specificity	Recombinant fusion protein containing a sequence corresponding to amino acids 1-110 of human Parvalbumin (Parvalbumin (PVALB) ) (NP_002845.1).

### ADDITIONAL INFORMATION

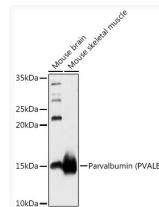
Note **STRICTLY FOR FURTHER SCIENTIFIC RESEARCH USE ONLY (RUO). MUST NOT TO BE USED IN DIAGNOSTIC OR THERAPEUTIC APPLICATIONS.**



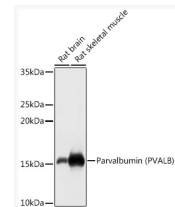
Immunofluorescence analysis of paraffin-embedded Rat cerebellum tissue using Parvalbumin (PVALB) Rabbit polyclonal antibody (STJ115499) at a dilution of 1:100 (40x lens). Secondary antibody: Cy3 Goat Anti-Rabbit IgG (H+L) at 1:500 dilution. Blue: DAPI for nuclear staining. Perform microwave antigen retrieval with 0.01 M citrate buffer (pH 6.0) prior to IF staining.



Immunohistochemistry analysis of Parvalbumin (PVALB) in paraffin-embedded human esophageal tissue using Parvalbumin (PVALB) Rabbit polyclonal antibody (STJ115499) at a dilution of 1:100 (40x lens). Perform microwave antigen retrieval with 10 mM PBS buffer pH 7.2 before commencing with immunohistochemistry staining protocol.



Western blot analysis of various lysates using Parvalbumin (PVALB) Rabbit polyclonal antibody (STJ115499) at 1:1000 dilution. Secondary antibody: HRP Goat Anti-Rabbit IgG (H+L) (STJS000856) at 1:10000 dilution. Lysates/proteins: 25 Mu g per lane. Blocking buffer: 3% nonfat dry milk in TBST. Detection: ECL Basic Kit. Exposure time: 60s.



Western blot analysis of various lysates using Parvalbumin (PVALB) Rabbit polyclonal antibody (STJ115499) at 1:1000 dilution. Secondary antibody: HRP Goat Anti-Rabbit IgG (H+L) (STJS000856) at 1:10000 dilution. Lysates/proteins: 25 Mu g per lane. Blocking buffer: 3% nonfat dry milk in TBST. Detection: ECL Basic Kit. Exposure time: 3s.