

Anti-PPP1CB antibody (227-327) (STJ115489)

GENERAL INFORMATION

Product Type	Primary antibodies
Applications	WB/IHC-P/IF/ICC/ELISA
Host / Source	Rabbit
Reactivity	Human/Mouse/Rat

PRODUCT PROPERTIES

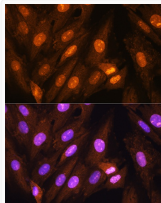
Clonality	Polyclonal
Concentration	Lot specific
Conjugation	Unconjugated
Purification	Affinity purification
Dilution Range	WB:1:500-1:2000 IHC-P:1:50-1:200 IF/ICC:1:50-1:200 ELISA:Recommended starting concentration is 1 μ g/mL. Please optimize the concentration based on your specific assay requirements.
Formulation	PBS with 0.09% Sodium Azide, 50% Glycerol, pH 7.3.
Isotype	IgG
Molecular Weight	Protein Mw: 37kDa Observed Mw: 37kDa
Storage Instruction	Store at -20°C for up to 1 year from the date of receipt, and avoid repeat freeze-thaw cycles.

TARGET INFORMATION

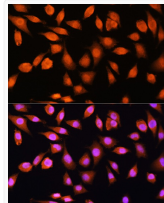
Gene ID	5500
Gene Symbol	PPP1CB
UniProt ID	PP1B_HUMAN
Immunogen Region	227-327
Immunogen Sequence	GADVSKFLNRHDLDLICRA HQVVEDGYEFFAKRQLVTLF SAPNYGFEFDNAGGMMSVDE TLMCSFQILKPSEKKAKYQY GGLNSGRPVTPPRTANPPKK R
Specificity	A synthetic peptide corresponding to a sequence within amino acids 227-327 of human PP1 beta (NP_002700.1).

ADDITIONAL INFORMATION

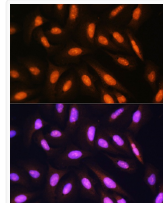
Note **STRICTLY FOR FURTHER SCIENTIFIC RESEARCH USE ONLY (RUO). MUST NOT TO BE USED IN DIAGNOSTIC OR THERAPEUTIC APPLICATIONS.**



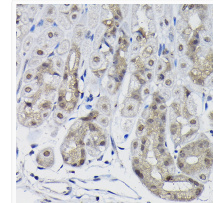
Immunofluorescence analysis of H9C2 cells using PP1 beta Rabbit polyclonal antibody (STJ115489) at dilution of 1:100. Blue: DAPI for nuclear staining.



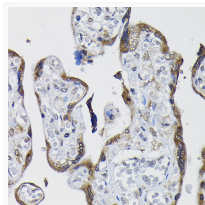
Immunofluorescence analysis of L929 cells using PP1 beta Rabbit polyclonal antibody (STJ115489) at dilution of 1:100. Blue: DAPI for nuclear staining.



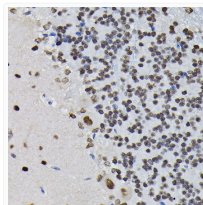
Immunofluorescence analysis of U2OS cells using PP1 beta Rabbit polyclonal antibody (STJ115489) at dilution of 1:100. Blue: DAPI for nuclear staining.



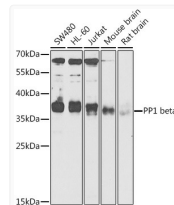
Immunohistochemistry analysis of paraffin-embedded mouse stomach using PP1 beta Rabbit polyclonal antibody (STJ115489) at dilution of 1:20 (40x lens). Perform high pressure antigen retrieval with 10 mM citrate buffer pH 6.0 before commencing with immunohistochemistry staining protocol.



Immunohistochemistry analysis of paraffin-embedded human placenta using PP1 beta Rabbit polyclonal antibody (STJ115489) at dilution of 1:20 (40x lens). Perform high pressure antigen retrieval with 10 mM citrate buffer pH 6.0 before commencing with immunohistochemistry staining protocol.



Immunohistochemistry analysis of paraffin-embedded rat brain using PP1 beta Rabbit polyclonal antibody (STJ115489) at dilution of 1:20 (40x lens). Perform high pressure antigen retrieval with 10 mM citrate buffer pH 6.0 before commencing with immunohistochemistry staining protocol.



Western blot analysis of extracts of various cell lines, using PP1 beta antibody (STJ115489) at 1:1000 dilution. Secondary antibody: HRP Goat Anti-Rabbit IgG (H+L) (STJS000856) at 1:10000 dilution. Lysates/proteins: 25 μ g per lane. Blocking buffer: 3% nonfat dry milk in TBST. Detection: ECL Enhanced Kit. Exposure time: 60s.