

## Anti-LGALS3 antibody (1-250) (STJ115467)

### GENERAL INFORMATION

Product Type	Primary antibodies
Applications	WB/IF/ICC/ELISA
Host / Source	Rabbit
Reactivity	Human/Mouse/Rat

### PRODUCT PROPERTIES

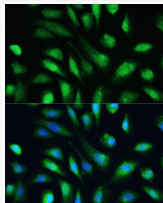
Clonality	Polyclonal
Concentration	Lot specific
Conjugation	Unconjugated
Purification	Affinity purification
Dilution Range	WB:1:500-1:2000 IF/CC:1:50-1:200 ELISA:Recommended starting concentration is 1 $\mu$ g/mL. Please optimize the concentration based on your specific assay requirements.
Formulation	PBS with 0.09% Sodium Azide, 50% Glycerol, pH7.3.
Isotype	IgG
Molecular Weight	Protein Mw: 26kDa Observed Mw: 28kDa
Storage Instruction	Store at -20°C for up to 1 year from the date of receipt, and avoid repeat freeze-thaw cycles.

### TARGET INFORMATION

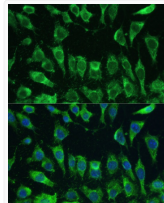
Gene ID	<a href="#">3958</a>
Gene Symbol	<a href="#">LGALS3</a>
UniProt ID	<a href="#">LEG3_HUMAN</a>
Immunogen Region	1-250
Immunogen Sequence	MADNFSLDALSGSGNPNPQ GWPGAWGNQPAGAGGYPGAS YPGAYPGQAPPAYPGQAPP GAYPGAPGAYPGAPAGVYV GPPSGPGAYPSSGQPSATGA YPATGPGYAPAGPLIVPYNL PLPGGVVPRMLITILGTVKP NANRIALDFQRGNDVAFHFN PRFNENRRRIVICNTKLDNN WGREERQSVFPFESGKPFKI QVLVEPDHFKVAVND AHLQ YNHRVKKLNEISKLGISGD
Specificity	Recombinant fusion protein containing a sequence corresponding to amino acids 1-250 of human Galectin 3/Galectin 3/LGALS3 (NP_002297.2).

### ADDITIONAL INFORMATION

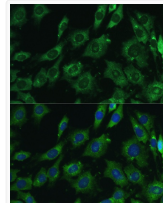
Note **STRICTLY FOR FURTHER SCIENTIFIC RESEARCH USE ONLY (RUO). MUST NOT TO BE USED IN DIAGNOSTIC OR THERAPEUTIC APPLICATIONS.**



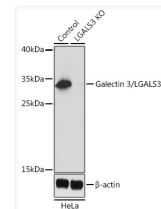
Immunofluorescence analysis of U-2 OS cells using [KO Validated] Galectin 3/LGALS3 Rabbit polyclonal antibody (STJ115467) at dilution of 1:100. Secondary antibody: Cy3 Goat Anti-Rabbit IgG (H+L) at 1:500 dilution. Blue: DAPI for nuclear staining.



Immunofluorescence analysis of L-929 cells using [KO Validated] Galectin 3/LGALS3 Rabbit polyclonal antibody (STJ115467) at dilution of 1:100. Secondary antibody: Cy3 Goat Anti-Rabbit IgG (H+L) at 1:500 dilution. Blue: DAPI for nuclear staining.



Immunofluorescence analysis of C6 cells using [KO Validated] Galectin 3/LGALS3 Rabbit polyclonal antibody (STJ115467) at dilution of 1:100. Secondary antibody: Cy3 Goat Anti-Rabbit IgG (H+L) at 1:500 dilution. Blue: DAPI for nuclear staining.



Western blot analysis of lysates from wild type (WT) and Galectin 3/Galectin 3/LGALS3 knockout (KO) HeLa cells, using [KO Validated] Galectin 3/LGALS3 Rabbit polyclonal antibody (STJ115467) at 1:1000 dilution. Secondary antibody: HRP Goat Anti-Rabbit IgG (H+L) (STJS000856) at 1:10000 dilution. Lysates/proteins: 25  $\mu$ g per lane. Blocking buffer: 3% nonfat dry milk in TBST. Detection: ECL Basic Kit. Exposure time: 1s.