

## Anti-GJA5 antibody (229-358) (STJ115455)

### GENERAL INFORMATION

Product Type	Primary antibodies
Applications	IF/ICC/ELISA
Host / Source	Rabbit
Reactivity	Human

### PRODUCT PROPERTIES

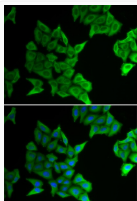
Clonality	Polyclonal
Concentration	Lot specific
Conjugation	Unconjugated
Purification	Affinity purification
Dilution Range	IF/ICC:1:50-1:200 ELISA:Recommended starting concentration is 1 µg/mL. Please optimize the concentration based on your specific assay requirements.
Formulation	PBS with 0.02% Sodium Azide, 50% Glycerol, pH 7.3.
Isotype	IgG
Molecular Weight	Protein Mw: 40kDa Observed Mw:
Storage Instruction	Store at -20°C for up to 1 year from the date of receipt, and avoid repeat freeze-thaw cycles.

### TARGET INFORMATION

Gene ID	<a href="#">2702</a>
Gene Symbol	<a href="#">GJA5</a>
UniProt ID	<a href="#">CXA5_HUMAN</a>
Immunogen Region	229-358
Immunogen Sequence	LGWKKIRQRFVKPRQHMAKC QLSGPSVGVQSCPTPPDFN QCLENGPGGKFFNPFSNNMA SQQNTDNLVTEQVRGQEQTPEGGFIQVRYGQKPEVPNGVS PGHRLPHGYHSDKRRLSKAS SKARSDDLVS
Specificity	Recombinant fusion protein containing a sequence corresponding to amino acids 229-358 of human GJA5 (NP_859054.1).

### ADDITIONAL INFORMATION

Note STRICTLY FOR FURTHER SCIENTIFIC RESEARCH USE ONLY (RUO). MUST NOT TO BE USED IN DIAGNOSTIC OR THERAPEUTIC APPLICATIONS.



Immunofluorescence analysis of HeLa cells using GJA5 antibody (STJ115455). Blue: DAPI for nuclear staining.