

Anti-CLU antibody (220-449) (STJ115440)

GENERAL INFORMATION

Product Type	Primary antibodies
Applications	WB/IHC-P/IF/ICC/ELISA
Host / Source	Rabbit
Reactivity	Human/Mouse/Rat

PRODUCT PROPERTIES

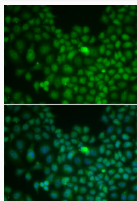
Clonality	Polyclonal
Concentration	Lot specific
Conjugation	Unconjugated
Purification	Affinity purification
Dilution Range	WB:1:500-1:2000 IHC-P:1:50-1:200 IF/ICC:1:50-1:200 ELISA:Recommended starting concentration is 1 Mu g/mL. Please optimize the concentration based on your specific assay requirements.
Formulation	PBS with 0.02% Sodium Azide, 50% Glycerol, pH 7.3.
Isotype	IgG
Molecular Weight	Protein Mw: 52kDa Observed Mw: 38kDa/57kDa
Storage Instruction	Store at -20°C for up to 1 year from the date of receipt, and avoid repeat freeze-thaw cycles.

TARGET INFORMATION

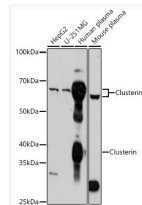
Gene ID	1191
Gene Symbol	CLU
UniProt ID	CLUS_HUMAN
Immunogen Region	220-449
Immunogen Sequence	FPKSRIVRSLMPFSPYEPLN FHAMFQPFLEMIHEAQQAMD IHFHSPAFQHPPTFEIREGD DDRTVCREIRHNSTGCLRMK DQCDKCREILSVDCSTNNPS QAKLRRELDLQVAERLTR KYNELKSYQWKMLNTSSL EQLNEQFNWVSRLANLTQGE DQYYLRVTTVASHTSDSDVP SGVTEVVVKLFDSDPITVTV PVEVSRKKNPKFMETVAEKAL QEYRKKHREE
Specificity	Recombinant fusion protein containing a sequence corresponding to amino acids 220-449 of human Clusterin alpha chain (NP_976084.1).

ADDITIONAL INFORMATION

Note **STRICTLY FOR FURTHER SCIENTIFIC RESEARCH USE ONLY (RUO). MUST NOT TO BE USED IN DIAGNOSTIC OR THERAPEUTIC APPLICATIONS.**



Immunofluorescence analysis of U2OS cells using Clusterin Rabbit polyclonal antibody (STJ115440). Blue: DAPI for nuclear staining.



Western blot analysis of extracts of various cell lines, using Clusterin Rabbit polyclonal antibody (STJ115440) at 1:1000 dilution. Secondary antibody: HRP Goat Anti-Rabbit IgG (H+L) (STJS000856) at 1:10000 dilution. Lysates/proteins: 25 Mu g per lane. Blocking buffer: 3% nonfat dry milk in TBST. Detection: ECL Basic Kit. Exposure time: 30s.